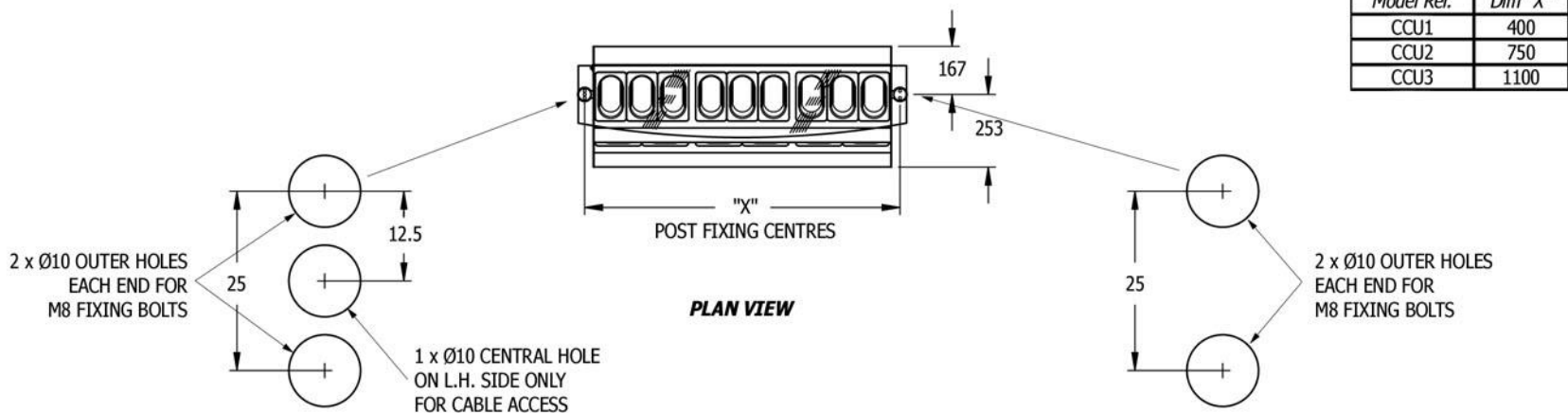


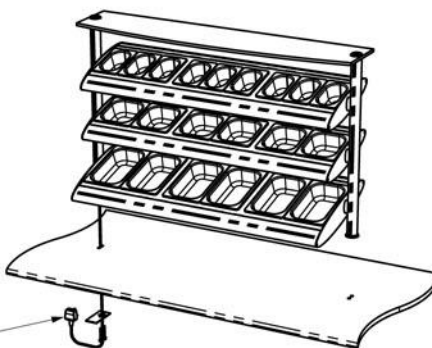


# SELF SERVICE CUTLERY CONDIMENTS UNIT - FITTING INSTRUCTIONS

## A) WORKTOP DRILLING



## B) FITTING TO WORKTOP



13A PLUG TOP & 2m LEAD  
(NOTE: PLUG SUPPLIED LOOSE) -  
PASS WIRE THROUGH CENTRAL  
HOLE ON LHS OF WORKTOP &  
SPREADER PLATE AND  
WIRE INTO PLUG TOP

2 x FIXING/SPREADER PLATES  
(SUPPLIED)

4 x M8x50 FIXING BOLTS  
(SUPPLIED)

**FRONT ISOMETRIC**  
(CUSTOMER SIDE)



Tel. 01254 238 282 Fax. 01254 238 228  
e-mail: [aftersales@cedlimited.com](mailto:aftersales@cedlimited.com)