



GLASS DISPLAY KING ROLL-IN CHILLED DISPLAYS - FITTING INSTRUCTIONS

MODELS:
GDK1000 & GDK1500



1) Area in which display is to be sited must have a minimum room floor area no less than 22 sq m.

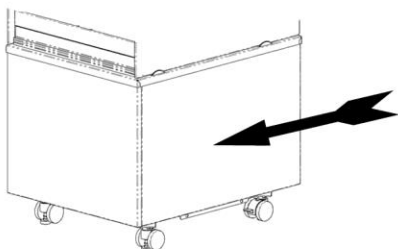
General Installation Considerations

- 2) Install over a sealed floor or ventilated floor void.
- 3) Do not site the display within 2m of ceiling mounted air conditioning grilles.
- 4) Do not site the display beneath a high level of direct sunlight.
- 5) Display will operate in a 24 hour environment.
- 6) Access to maintain condensing unit should be made via removable fascia panels or doors to customer and operator side of counter.

FREE-STANDING APPLICATION

A) ROLL UNIT INTO POSITION

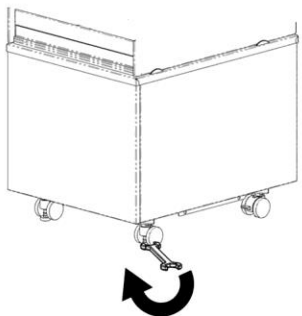
UNIT SUPPLIED WITH CASTORS



B) ADJUST UNIT HEIGHT

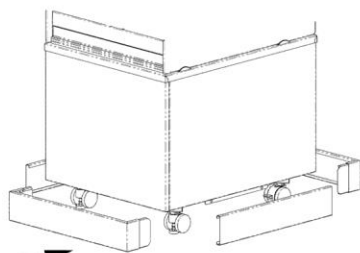
USING SUPPLIED SPANNER

(ENSURE THE HALF NUT IS WOUND FULLY UPWARDS)



C) FIT OPTIONAL KICKPLINTH

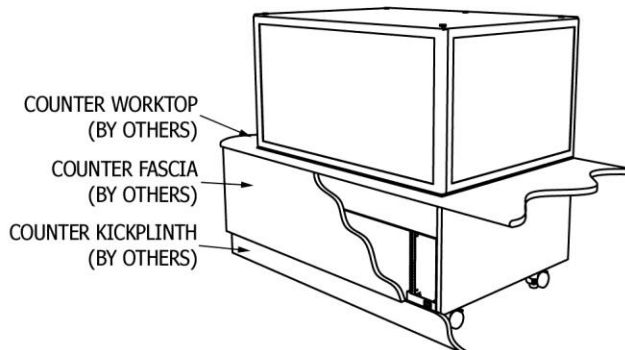
FRONT & REAR LOCATES WITH MAGNETS



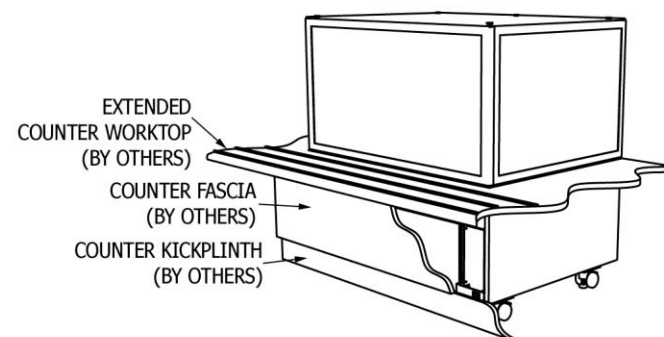
NOTE: OPTIONAL KICKPLINTH IS SUITABLE FOR LOWEST ADJUSTED UNIT HEIGHT

COUNTER LOCATED APPLICATION

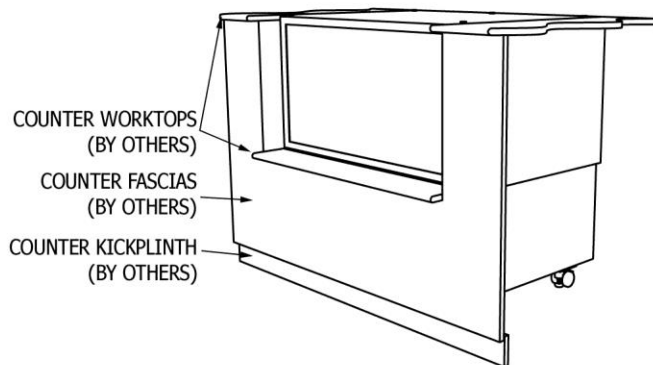
STD WORKTOP



EXTENDED WORKTOP

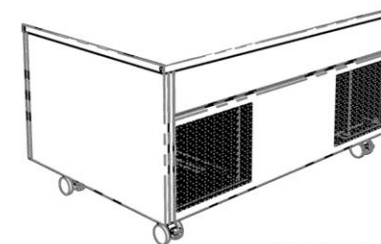


RECESSED IN COUNTER



FREE-STANDING OR COUNTER LOCATED :

* FRONT FASCIA PANEL VENTILATION IS NOT REQUIRED*

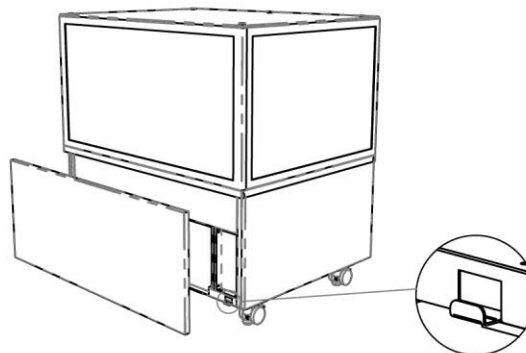


TYPICAL REAR VIEW (OPERATOR SIDE) SHOWING AIR IN/OUT TO REAR

FITTING OPTIONAL FASCIA PANEL

IF NOT FITTED WITH INITIAL ORDER

LIFT FASCIA PANEL INTO RECESS UNDER WORKTOP AND PULL DOWN ONTO TABS



BEND OUT AND UP TABS LOCATED AT EACH END



Tel. 01254 238 282 Fax. 01254 238 228
e-mail: aftersales@cedlimited.com