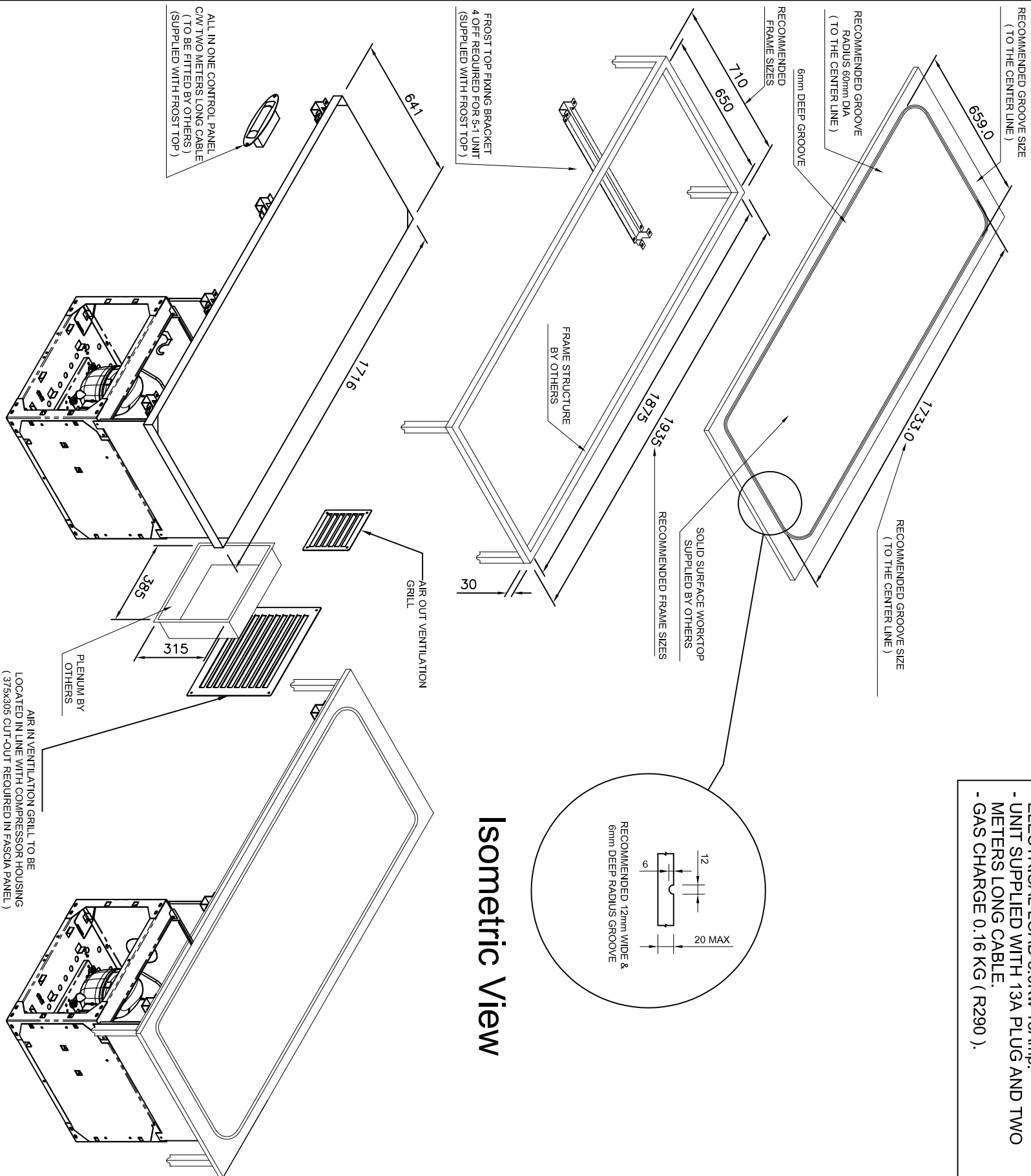


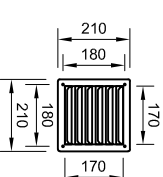
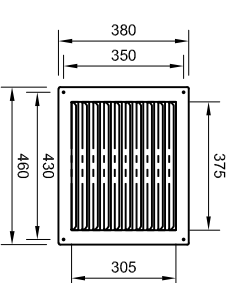
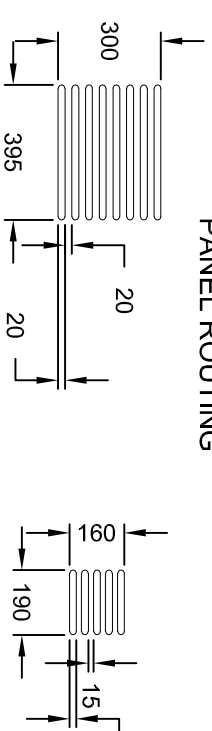
NOTE:-
THE FROST TOP IS PRE FACTORY SET TO
ACHIEVE TEMPERATURES BETWEEN -8 TO -10°C
WHICH IS THE OPTIMUM TEMPERATURE FOR
PRODUCING FROST ON THE WORKTOP.
PLEASE CHECK WITH WORKTOP MANUFACTURER
THAT THE MATERIAL IS ABLE TO PERFORM WITH
IN THIS TEMPERATURE RANGE.

INSTALLATION NOTES:

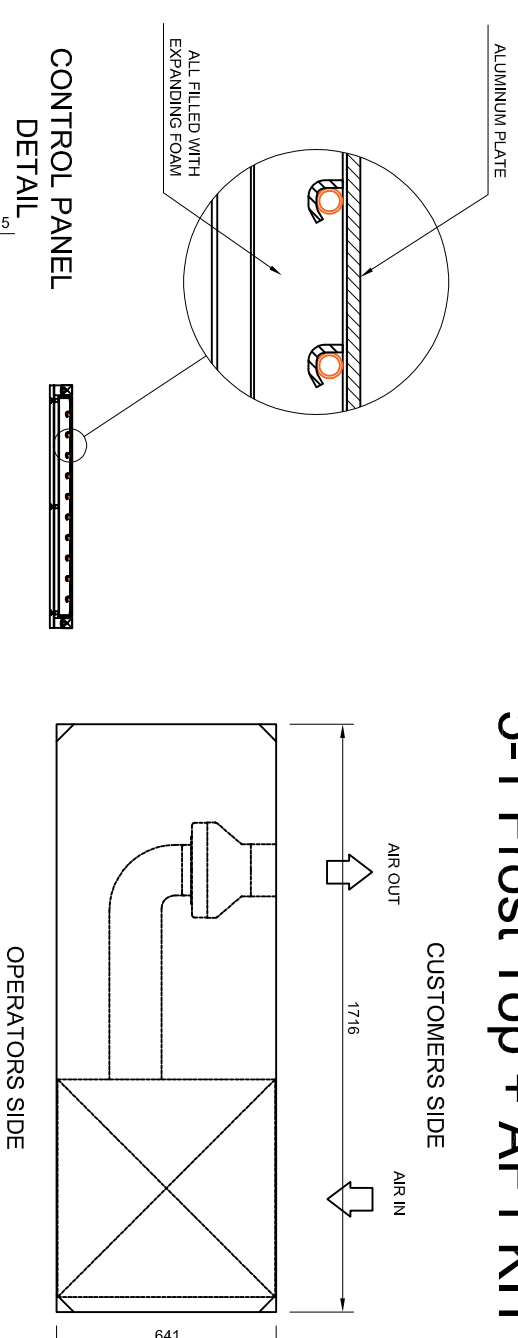
- TEMPERATURE TRANSFER COMPOUND (SUPPLIED BY - CED) TO BE APPLIED EVENLY IN BETWEEN SOLID SURFACE AND FROST TOP.
- (iii) SILICONE NOT TO BE USED !!!)
- ADEQUATE DUCTING REQUIRED FOR CORRECT AIR CIRCULATION (BY OTHERS).
- ELECTRICAL LOAD 3.0Kw 13Amp.
- UNIT SUPPLIED WITH 13A PLUG AND TWO METERS LONG CABLE.
- GAS CHARGE 0.16 KG (R290).



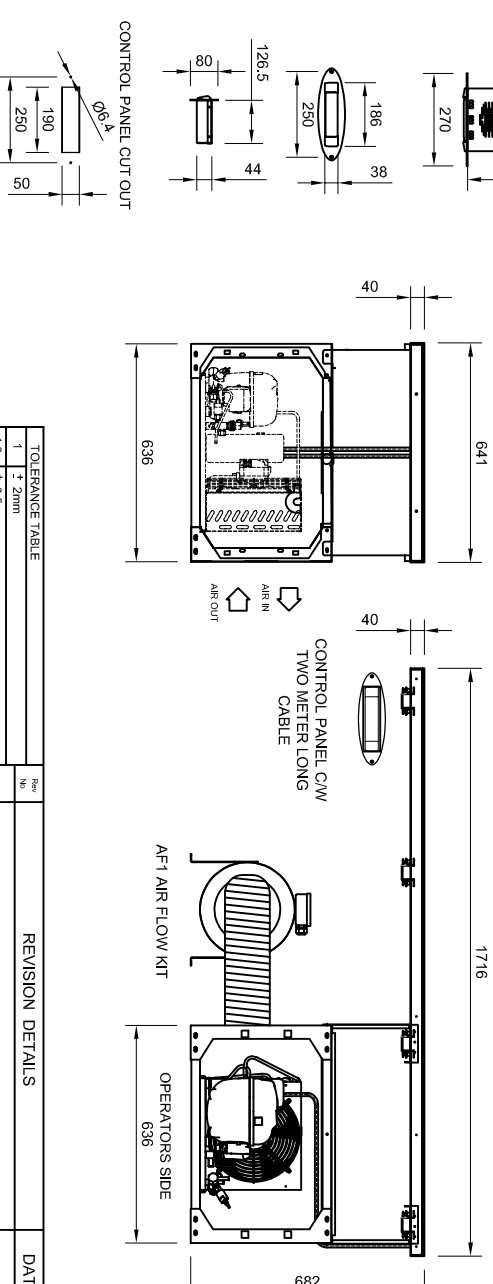
ALTERNATE FASCIA PANEL ROUTING



5-1 Frost Top + AF1 KIT



CONTROL PANEL DETAIL



| | | | | |
|-----------------|---------|------------------|------------|---------------|
| TOLERANCE TABLE | | REVISION DETAILS | | DATE |
| 1 | ± 2 mm | NO | | |
| 1.0 | ± 0.5mm | - | | - |
| SITE: | | VIRGIN LOUNGE | | - |
| CLIENT: | | TITLE: | | 5-1 FROST TOP |
| DRAWN BY: | | IWS | ORDER NO: | 9854 |
| SCALE: | | 1:16 @ A2 | DRG NO: | |
| | | DATE: | 16/03/2020 | 236466 |