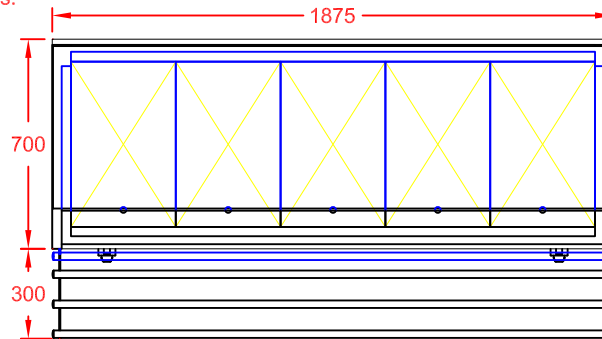
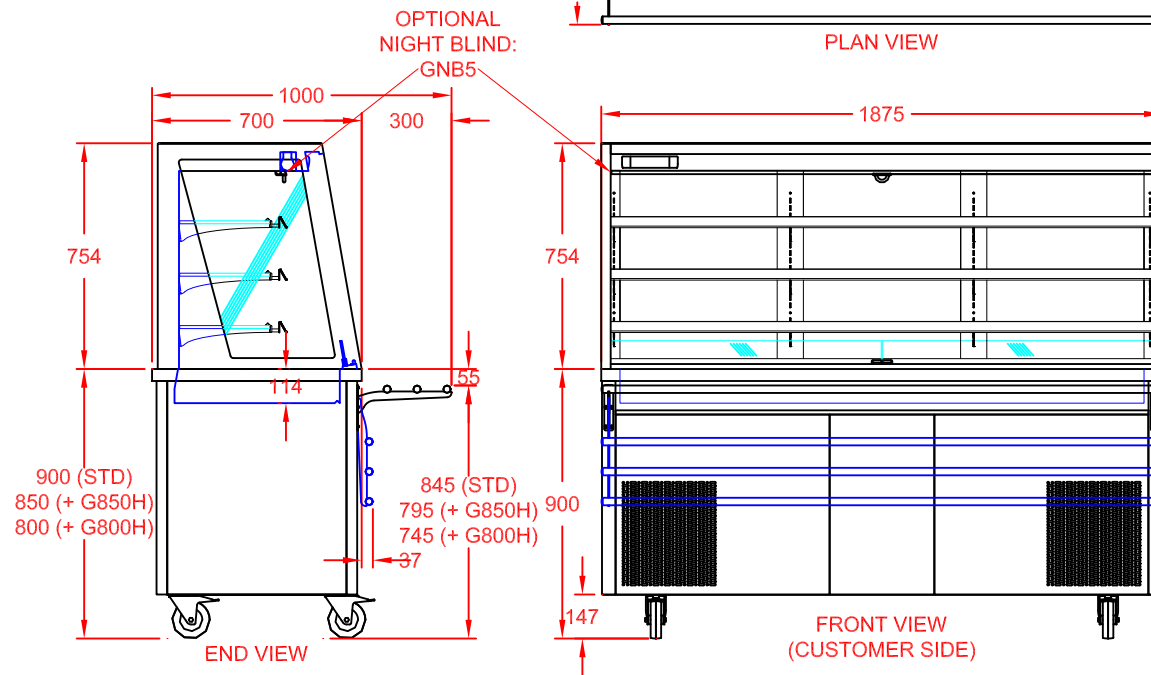


### Ventilation / Display Performance Considerations

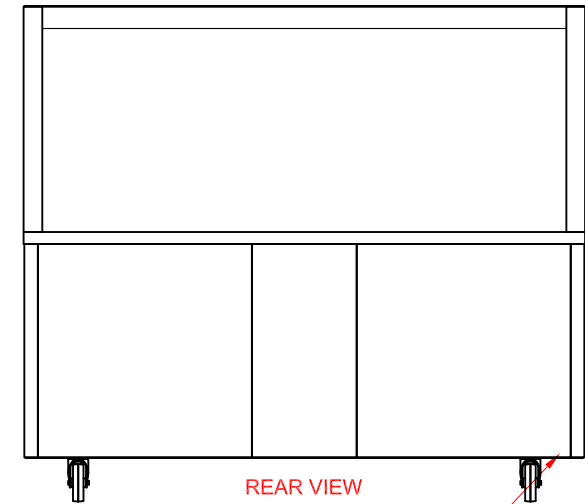
- 1) Area in which display is to be sited must have a minimum room floor area no less than 34 sq m.
- 2) Install over a sealed floor or ventilated floor void.
- 3) Do not site the display within 2m of ceiling mounted air conditioning grilles.
- 4) Do not site the display beneath a high level of direct sunlight.
- 5) Display will operate in a 24 hour environment.



PLAN VIEW



FRONT VIEW  
(CUSTOMER SIDE)



REAR VIEW  
(OPERATOR SIDE)

13A PLUG TOP & 3m CABLE ENTRY  
POWER SUPPLY: 13A, 230V, 1.75kW

COLOUR FINISH (FRONT & SIDES)	OPTION CODE
MERLIN GREY	STANDARD
OCEAN BLUE	GBLUEWSC5
GOOSEWING LIGHT GREY	GGREYWSC5
POPPY RED	GPREDWSC5
WHITE	GWHITWSC5
FOREST GREEN / HERITAGE	GGRENWSC5
BUTTERMILK CREAM / HONESTY	GCREMWSC5
BLACK	GBLAKWSC5
WALNUT	GWALNWSC5
BEECH	GBEECWSC5
OAK	GOAKWSC5
SATIN S/STEEL	GSSTLWSC5

APPROX. UN-CRATED  
WEIGHT OF UNIT: 237Kg



CED FABRICATIONS LTD  
UNITS A1-A4, FALCON COURT  
CLAYTON BUSINESS PARK  
CLAYTON-LE-MOORS  
HYNDBURN  
LANCASHIRE BB5 5JD

This drawing and information herein is confidential to CED Fabrications Ltd. It is issued in confidence that it will not be disclosed to any third party in part or in whole without permission from CED FABRICATIONS Ltd.

© CED FABRICATIONS LTD



### DESCRIPTION:

GLIDE DINING CARTS  
5-1 SELF HELP COLD MULTIDECK  
(FIXED BACK - R290 REFRIGERANT)  
+ S/STEEL FOLDING TUBULAR TRAY RAIL

SCALE: 1 : 25@A4 REV No: A

PRODUCT  
CODE:

GMDF5HT  
+ GTTS5