

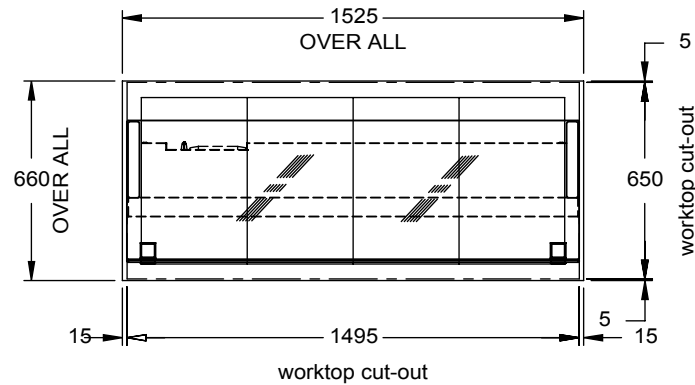
#### Recommended Control Box Positioning

Site the control box preferably to an upright surface, in an accessible service void, adjacent to or below the display unit (minimum clearance below underside of display unit = 200mm).

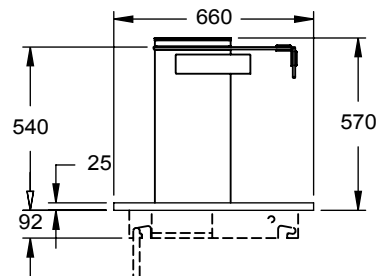
#### Incorrect Control Box Positioning

The control box must not be located

- 1) directly to the underside of the display unit,
- 2) above a hot cupboard or,
- 3) where ambient temperature is above 40°C,
- 4) where likely to allow ingress of water i.e. wet floor areas.



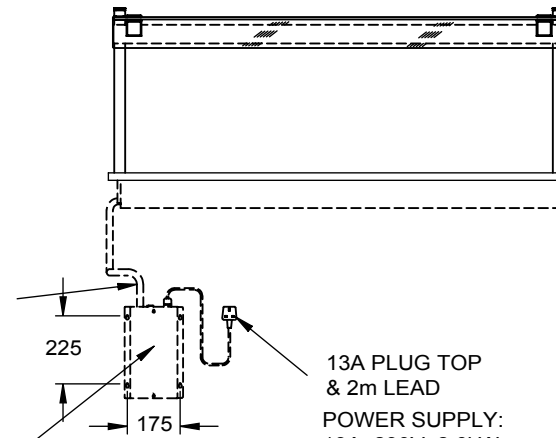
PLAN VIEW



END VIEW

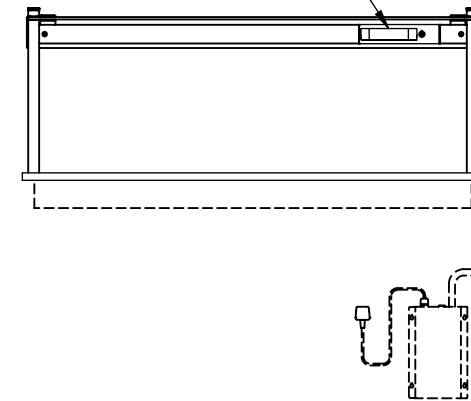
2m FLEXIBLE CONDUIT TO CONTROL BOX

CONTROL BOX  
(4 x M4 FIXINGS)



FRONT VIEW  
(CUSTOMER SIDE)

GANTRY MOUNTED DIGITAL CONTROL PANEL



REAR VIEW  
(OPERATOR SIDE)

#### Display Performance Considerations

The position of the display may effect its performance: Site the display in a position away from direct draughts and also indirect draughts created by air conditioning. In known draught conditions or if in doubt, performance can be enhanced by insallation of the assisted service glass option - KAS4

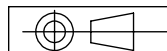
APPROX. UN-CRATED  
WEIGHT OF UNIT: 69Kg



CED FABRICATIONS LTD  
UNITS A1-A4, FALCON COURT  
CLAYTON BUSINESS PARK  
CLAYTON-LE-MOORS  
HYNDBURN  
LANCASHIRE BB5 5JD

This drawing and information herein is confidential to CED Fabrications Ltd.  
It is issued in confidence that it will not be disclosed to any third party in part or in whole without permission from CED FABRICATIONS Ltd.

© CED FABRICATIONS LTD



#### DESCRIPTION:

CABINET KUBUS DROP-IN HEATED  
4 - 1 G N HOTPLATE

SCALE: 1 : 25 @ A4

REV No: -

PRODUCT  
CODE:

KHP4