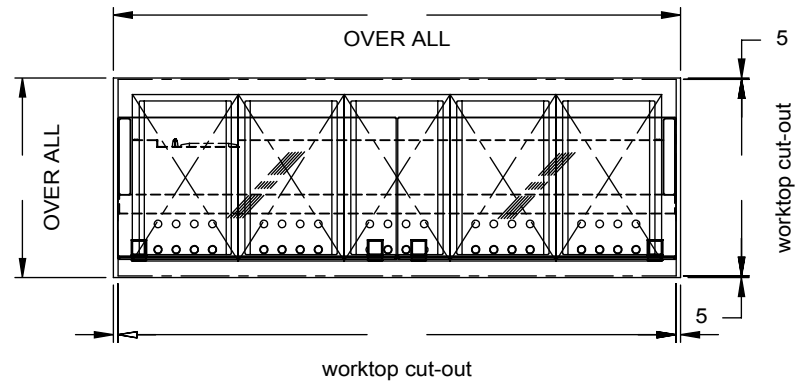
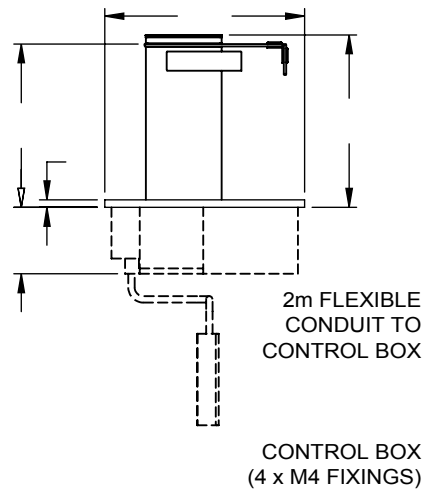


Recommended Control Box Positioning
 Site the control box preferably to an upright surface, in an accessible service void, adjacent to or below the display unit (minimum clearance below underside of display unit = 200mm).

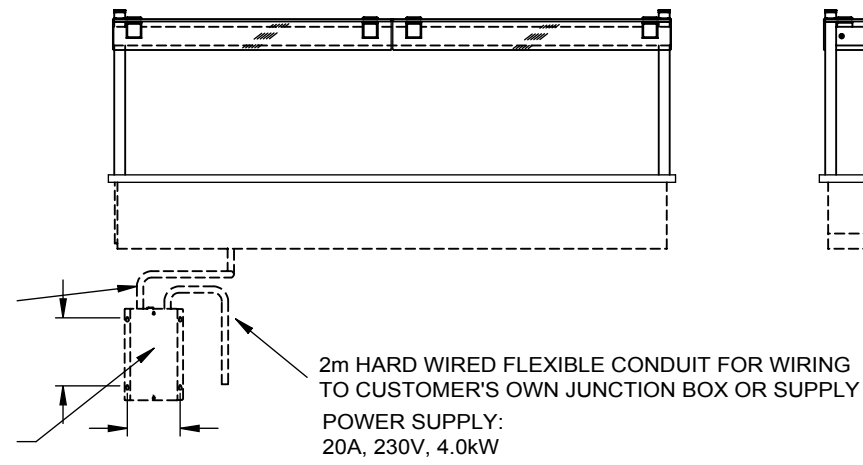
Incorrect Control Box Positioning
 The control box must not be located
 1) directly to the underside of the display unit,
 2) above a hot cupboard or,
 3) where ambient temperature is above 40°C,
 4) where likely to allow ingress of water i.e. wet floor areas.



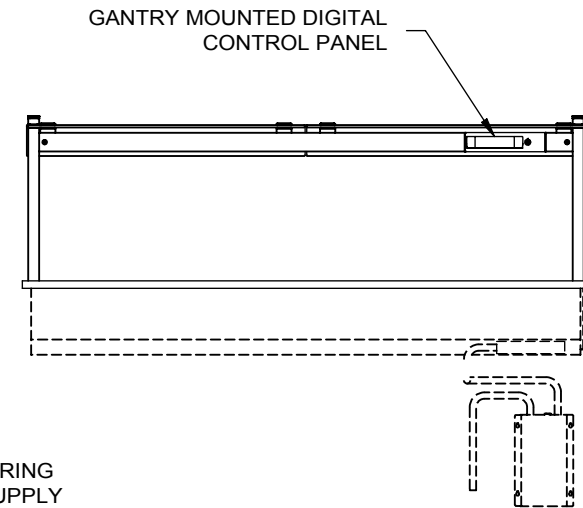
PLAN VIEW



END VIEW



FRONT VIEW
(CUSTOMER SIDE)



REAR VIEW
(OPERATOR SIDE)

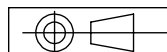
APPROX. UN-CRATED
 WEIGHT OF UNIT: 71Kg



CED FABRICATIONS LTD
 UNITS A1-A4, FALCON COURT
 CLAYTON BUSINESS PARK
 CLAYTON-LE-MOORS
 HYNDBURN
 LANCASHIRE BB5 5JD

This drawing and information herein is confidential to CED Fabrications Ltd.
 It is issued in confidence that it will not be disclosed to any third party in part or in whole without permission from CED FABRICATIONS Ltd.

© CED FABRICATIONS LTD



DESCRIPTION:

CABINET KUBUS DROP-IN HEATED
 5-1 G_N BAIN MARIE (DRY HEAT)

SCALE: 1 : 25 @ A4

REV No:

PRODUCT
 CODE:

KHBM5