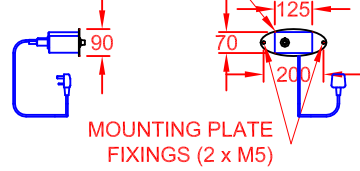
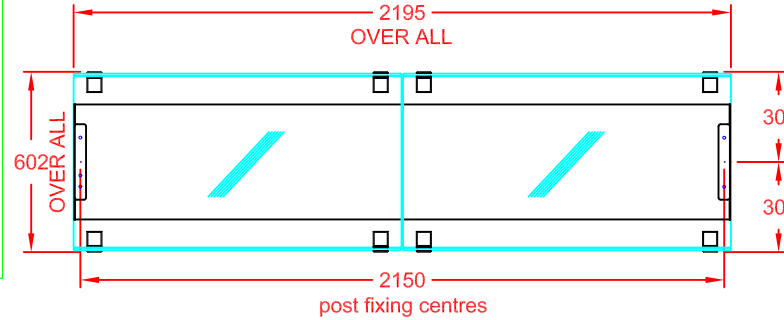
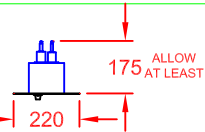


# OPTIONAL QUARTZ DIMMER (QC1) DETAILS

DIMMER MOUNTING CUT-OUT (125 x 70)



MOUNTING PLATE FIXINGS (2 x M5)

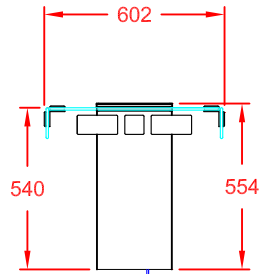


PLAN VIEW

2 x Ø10 OUTER HOLES EACH END FOR M8 FIXING BOLTS

1 x Ø10 CENTRAL HOLE ON L.H. SIDE ONLY FOR CABLE ACCESS

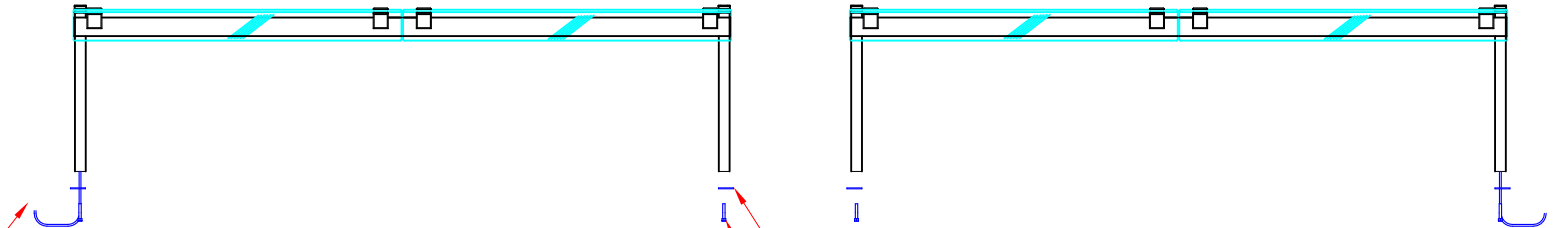
WORKTOP DRILLING DETAIL (SCALE 1:5)



END VIEW

POWER SUPPLY: 13A, 230V, 1.8kW

UNIT SUPPLIED WITH 2m LEAD FOR WIRING TO CUSTOMER'S OWN CONTROL CIRCUIT OR OPTIONAL DIMMER (QC1)



FRONT VIEW (CUSTOMER SIDE)

2 x FIXING/SPREADER PLATES (SUPPLIED)  
4 x M8 FIXING BOLTS (SUPPLIED)

REAR VIEW (OPERATOR SIDE)

APPROX. UN-CRATED WEIGHT OF UNIT: 36Kg

## DESCRIPTION:

CABINET KUBUS HEATED  
6-1 G<sub>n</sub> ISLAND GANTRY

SCALE: 1 : 2.5 @ A4 REV No: -

PRODUCT CODE: KHIG6



CED FABRICATIONS LTD  
UNITS A1-A4, FALCON COURT  
CLAYTON BUSINESS PARK  
CLAYTON-LE-MOORS  
HYNDBURN  
LANCASHIRE BB5 5JD

This drawing and information herein is confidential to CED Fabrications Ltd. It is issued in confidence that it will not be disclosed to any third party in part or in whole without permission from CED FABRICATIONS Ltd.

© CED FABRICATIONS LTD

