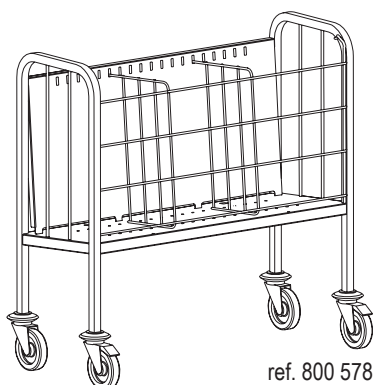


PLATE TROLLEYS RAISED with removable front grids and separation grids

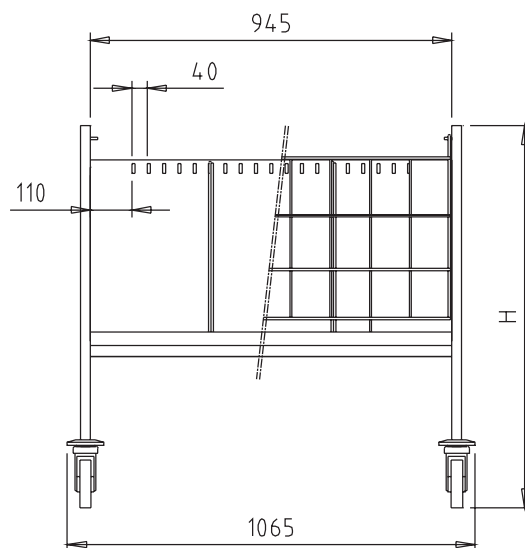
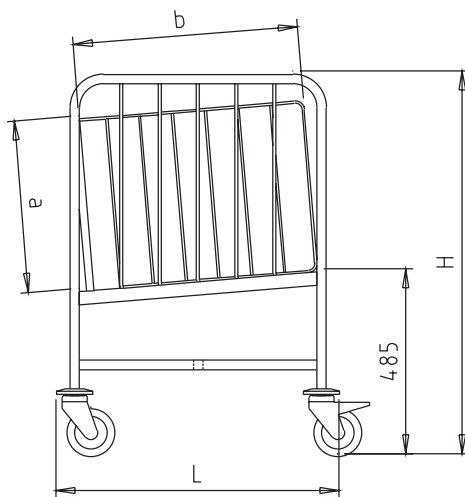
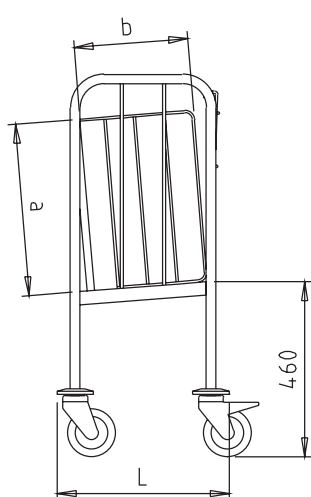


ref. 800 578



ref. 800 579

- Food quality stainless steel construction.
- Arched handles made of 25 x 25 mm tube.
- 4 swivel wheels Ø125 mm 2 of which are braked, with polyamide cover and non-marking tread.
- 2 adjustable separation grids made of stainless steel wire, Ø6 mm.
- Stainless steel front grid, Ø6 mm, can be removed and hooked on the back of the trolley when loading and unloading plates.
- Plates of up to Ø290 mm.
- Optional:
 - polyamide cover.
 - additional separation grid.
 - Serving element for cutlery ref. 800 571



Number of plates	Maximum load (kg)	L (mm)	H (mm)	a (mm)	b (mm)	Reference of trolley	Reference of cover	Ref. of additional separation grid
200 in 3 piles	120	450	1000	480	315	800 578	228 196	228 263