

FEATURES

Download All Technical Drawings From www.cedfabstd.co.uk

Model Sizes.

The Glide low height tray pick up unit is a mobile storage stand with full front and sides clad with external fascia panels, a recessed 605mm wide x 263mm high extra tray storage facility to rear, a 304 gd. s/steel worktop and lockable castors.

The unit is 500mm high and is 700mm wide x 700mm deep, to enable positioning alongside adjacent Glide units, or as a freestanding tray collection point at the dining hall entrance.

Suitability For Worktop Mounted Equipment.

The s/steel worktop is suitable for supporting non electrical counter top equipment also. (max 55Kg). The 500mm high stand can be used as a step down area in the counter run to position a soup kettle stand or gravy station (a localised power supply is required).

Low Maintenance

Easy, cleanable surfaces and a durable design ensure low maintenance for users.

Model Dimensions.

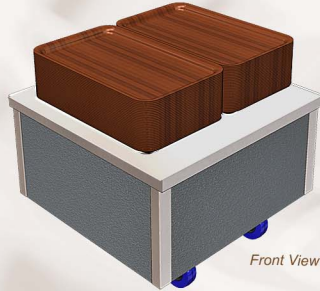
(Model GTP1) = 700mm (L), 700mm (D), 500mm (H) with lockable heavy duty castors.

Model Finishes.

The base front & outer end panels are finished in plastisol steel, colour merlin grey.

Worktop is 304 gd. s. steel & all other steel surfaces are 430gd.

****This is an ambient unit with no electrical power supply****



ABOUT

The low height tray pick up stand is part of the Glide range of mobile dining carts - a choice of cold, hot & ambient commercial catering carts that combine to form a food service counter solution as unique as your requirements!

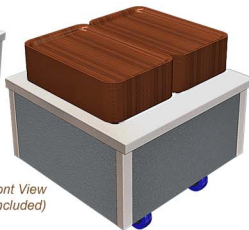
The ambient low height tray pick up also doubles as a soup kettle stand if required & has a plain s/steel 304 gd. worktop. It is ideal for use as freestanding collection point at the entrance to the dining hall or inbetween standard height Glide units in the counter run.

The model has an open rear and a base shelf for storing extra trays in. The front/side base panels are finished in leathergrain plastisol steel, colour merlin grey (BS 18B25). This versatile unit is 700mm(l) x 700mm(d) x 500mm(h) & is supplied with lockable castors.

FINISHES

Selection Of Colour Finishes To Low Height Tray Pick Up Stand.

11 alternative choices of durable steel, colour & wood effect for external front & side panels.



Rear View

Front View
(Trays Not Included)

Glide Low Height Tray Pick Up Stand

Code	Description	Capacity (Gn)	Dimensions (L x D x H mm)	Rear Storage (W x H mm)	Weight (kg)
GTP1	Glide Low Height Tray Pick Up Stand	n/a	700 x 700 x 900	605 x 263	26

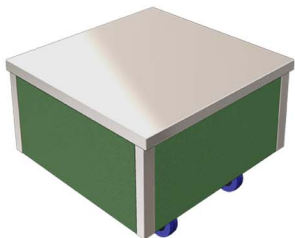
Model Description. (GTP1) Glide mobile dining cart, ambient low height tray pick up/ soup kettle stand, plain s/steel 304 gd. worktop, for use as freestanding collection point or inbetween std. height Glide units, open rear c/w base shelf for storing extra trays in, front/side base panels in leathergrain plastisol steel, colour merlin grey (BS 18B25), 700(l) x 700(d) x 500(h), lockable castors. (Optional Colour Fascia Panels Finishes Available).

FINISHES

Colour Finishes To Base Panels (Front & Sides)

For Glide Low Height Tray Pick Up Stand

Option Description. 11 choices of leathergrain plastisol steel colours/ wood effect laminated steel for front fascia panel/ external ends.



Model GTP1
Option
GGRENGTP1 Shown



Model GTP1
Option
GBEECGTP1 Shown

Ocean Blue (BS 18C37)
Code Description
GBLUEGTP1 Glide Blue Fascia: Low Tray Stand

Goosewing Light Grey (BS 10A05)
Code Description
GGREYGTP1 Glide Grey Fascia: Low Tray Stand

Poppy Red (BS 04E5B)
Code Description
GPREDGTP1 Glide Red Fascia: Low Tray Stand

White (BS 00E55)
Code Description
GWHITGTP1 Glide White Fascia: Low Tray Stand

DL85 Walnut Finish Panel
Code Description
GWLNGTP1 Desc. Glide Walnut Fascia Low Tray Stand



DL84 Oak Finish Panel
Code Description
GOAKGTP1 Desc. Glide Oak Fascia Low Tray Stand



DL76 Beech Finish Panel
Code Description
GBEECGTP1 Desc. Glide Beech Fascia Low Tray Stand



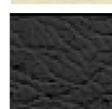
Satin S/Steel (430 gd.)
Code Description
GSSTLGTP1 Glide S/steel Fascia: Low Tray Stand



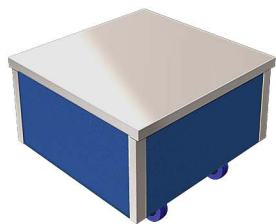
Forest Green/Heritage (RAL 6002)
Code Description
GGRENGTP1 Glide Green Fascia: Low Tray Stand



Buttermilk Cream/ Honesty (BS 10C31)
Code Description
GCREMGTP1 Glide Cream Fascia: Low Tray Stand



Black (BS 00E53)
Code Description
GBLAKGTP1 Glide Black Fascia: Low Tray Stand



Glide Low Height Tray Pick Up Stand (& Colour Finish Blue)

Model Code	Option Code	Description
GTP1	GBLUEGTP1	Glide Low Tray Unit + (Blue)



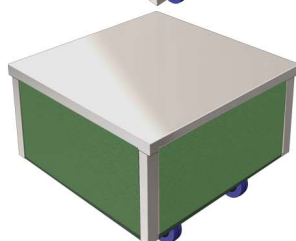
Glide Low Height Tray Pick Up Stand (& Colour Finish S/Steel)

Model Code	Option Code	Description
GTP1	GSSTLGTP1	Glide Low Tray Unit + (S/Steel)



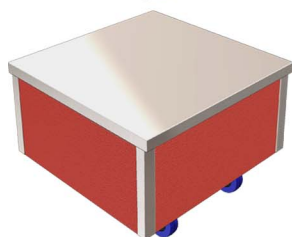
Glide Low Height Tray Pick Up Stand (& Colour Finish Grey)

Model Code	Option Code	Description
GTP1	GGREYGTP1	Glide Low Tray Unit + (Grey)



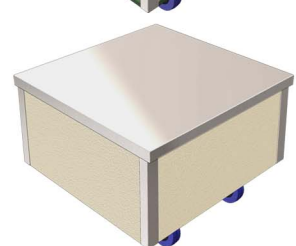
Glide Low Height Tray Pick Up Stand (& Colour Finish Green)

Model Code	Option Code	Description
GTP1	GGRENGTP1	Glide Low Tray Unit + (Green)



Glide Low Height Tray Pick Up Stand (& Colour Finish Red)

Model Code	Option Code	Description
GTP1	GPREDGTP1	Glide Low Tray Unit + (Red)



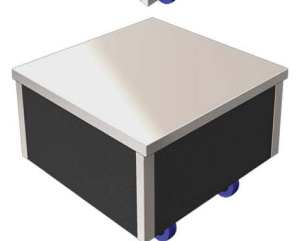
Glide Low Height Tray Pick Up Stand (& Colour Finish Cream)

Model Code	Option Code	Description
GTP1	GCREMGTP1	Glide Low Tray Unit + (Cream)



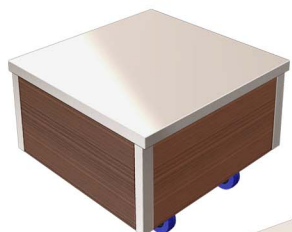
Glide Low Height Tray Pick Up Stand (& Colour Finish White)

Model Code	Option Code	Description
GTP1	GWHITGTP1	Glide Low Tray Unit + (White)



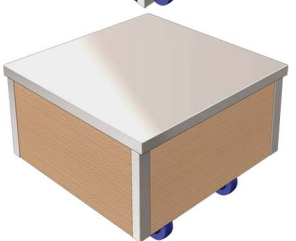
Glide Low Height Tray Pick Up Stand (& Colour Finish Black)

Model Code	Option Code	Description
GTP1	GBLAGGTP1	Glide Low Tray Unit + (Black)



Glide Low Height Tray Pick Up Stand (& Colour Finish Walnut Wood Effect)

Model Code	Option Code	Description
GTP1	GWALGTP1	Glide Low Tray Unit + (Walnut)



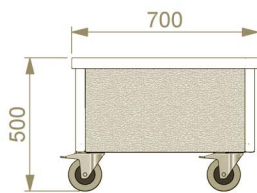
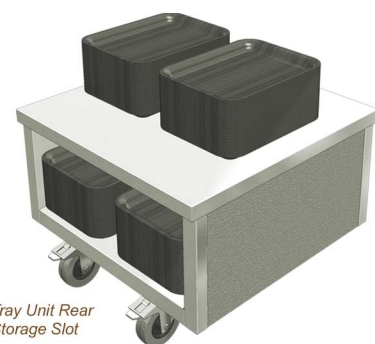
Glide Low Height Tray Pick Up Stand (& Colour Finish Beech Wood Effect)

Model Code	Option Code	Description
GTP1	GBEECGTP1	Glide Low Tray Unit + (Beech)

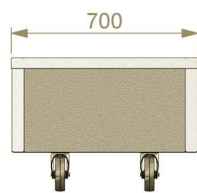


Glide Low Height Tray Pick Up Stand (& Colour Finish Oak Wood Effect)

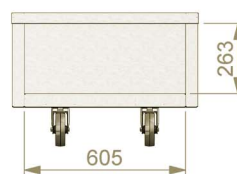
Model Code	Option Code	Description
GTP1	GOAKGTP1	Glide Low Tray Unit + (Oak)



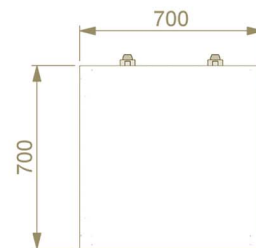
GTP1 SIDE VIEW



GTP1 FRONT VIEW



GTP1 REAR VIEW



GTP1 PLAN VIEW

