

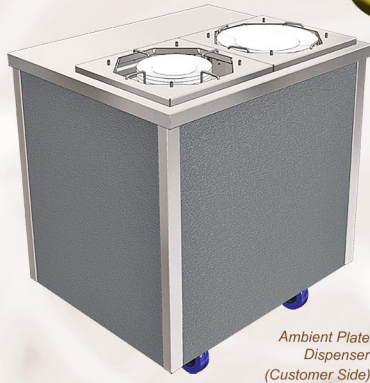


Ambient Twin Plate Dispenser

(For 205mm - 305 mm Plates)



Ambient Plate Dispenser (Operator Side)



Ambient Plate Dispenser (Customer Side)

FEATURES

Download All Technical Drawings From www.cedfabsltd.co.uk

Model Type.

The Glide ambient plate dispenser is a mobile, self levelling, spring loaded plate dispenser with full front/ side fascia panels & a s/steel worktop.

The dispenser has two storage sections - total capacity of 88 -106 plates, depending on type. These can be adjusted for 8"-12" (205mm-305mm) diameter plates. The dispensers lift out so springs can be removed, to allow for using the dispenser with smaller and lighter plates.

Model Dimensions.

The plate dispenser is available as 2-1Gn (825mm) long, 700mm deep & 900mm high & has locking heavy duty castors.

Model Finishes.

Front and outer end panels in plastisol steel, colour merlin grey, rear panel is in s/steel. The dispenser worktop is made from 304 gd steel & other external surfaces are in 430 gd. s/steel.

Low Maintenance

Easy, cleanable surfaces and a durable design ensure low maintenance for users..

Finishes & Options

The ambient plate dispenser can be customised with many accessories such as tray slides, tray rails, colour finishes and low height versions for junior/ primary age use.

A wall sited version of the ambient plate dispenser is also available, for alcoves or recesses, c/w front facing controls, low height options & colour finishes for base panels & sides. (See separate model GWSAPD2).

ACCESSORIES & FINISHES

Folding Steel Solid or Tubular Tray Slides.

Tray slides + 40mm (d) height = (h) - 55mm.

Colour Finishes To Front/ Side Panels.

11 alternative choices of durable steel, colour & wood effect finishes for plate dispenser unit front/ side panels, to compliment other selected models in the servery colour scheme.



ABOUT

The twin ambient plate dispenser forms part of the Glide range of mobile dining carts - a choice of cold, hot & ambient commercial catering carts that combine to form a food severy counter solution as unique as your requirements !

The dispenser has two spring loaded, self levelling plate storage sections within a s/steel worktop. Each spring loaded dispenser section is adjusted by lifting the four plate guide rods inwards/ outwards, to enable the storage of various diameter plates, between 8"-12" (205mm-305mm) with a total capacity of 88 -106 plates, depending on type.

The springs keep the plates below rising to the top of the dispenser, as top plates are removed. Springs can be easily removed to facilitate smaller and lighter weight plates.

The customer front /side base panels are in leathergrain plastisol steel, colour merlin grey (BS 18B25), the operator rear panel is in s/steel and the worktop is 304 gd. s/steel. The plate dispenser base has lockable castors fitted.

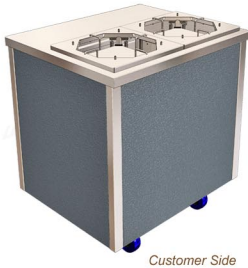
HEIGHT OPTIONS

Low Height Model (Glide Junior).

850mm or 800mm high options for junior/ primary use.



Operator Side



Customer Side

Glide Twin Ambient Plate Dispenser

Code	Description	Capacity (Gn)	Dimensions (L x D x H mm)	Depth With Tray Slide Up/ Down	Weight (kg)
GAPD2	Glide 2x Ambient Plate Dispenser	2-1Gn	825 x 700 x 900/1440	1000/ 740mm	54

Model Description. (GAPD2) Glide ambient twin plate dispenser trolley, s/steel worktop, spring loaded self levelling, adjustable to suit 205-305mm (diam) 8-12" plates, 825(l) x 700(d) x 900mm(h), total capacity 88 -106 plates, depending on type, removable dispensers for weight (spring) adjustment, customer front/side base panels in leathergrain plastisol steel, colour merlin grey (BS 18B25), operator side rear panel in s/steel, lockable castors. (Tray Rail Optional)

Glide S/Steel Folding Tubular Tray Rail

Option Code	Description	Capacity (Gn)	Dimensions (L x D x H mm)	Weight (kg)
GTTS2	Glide S/Steel Drop Down Tray Rail	2-1 Gn	825 x 298 x (base-55)	2

For Twin Amb. Plate Dispenser

Option Description.

S/steel tubular tray rail, 304 gd. Ø25 tube, drop down bracket type, up position depth + 298 mm to base unit, down position depth + 40mm to base unit. Trayslide height = base unit (h) - 55mm.

Glide S/Steel Folding Solid Tray Slide

Code	Description	Capacity (Gn)	Dimensions (L x D x H mm)	Weight (kg)
GSTS2	Glide S/Steel Drop Down Solid Tray Slide	2-1Gn	825 x 302 x (base-55)	3

For Twin Amb. Plate Dispenser

Option Description.

S/steel solid tray slide, drop down bracket type, up position depth + 302 mm to base unit, down position depth + 40mm to base unit. Trayslide height = base unit (h) - 55mm.

Low Height Model (Glide Junior) - 800/ 850mm (h)

Code	Description	Base Height (mm)	Optional Tray Slide Height (mm)
G800H**	Glide Base Unit 800mm Height	800	745
G850H	Glide Base Unit 850mm Height	850	795

**G800H Bespoke Option (With Extended lead Time)

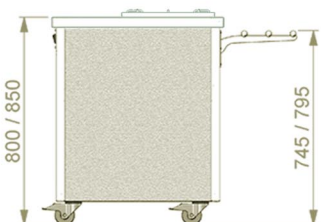
For Twin Amb. Plate Dispenser

Option Description.

Lower height option codes for junior/ primary use.

****800mm (h) base unit, c/w 100mm lockable castors. (Optional trayslide height becomes 745mm high)****

850mm (h) base unit, c/w 100mm lockable castors. (Optional trayslide height becomes 795mm high).





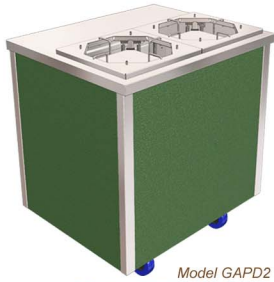
Ambient Twin Plate Dispenser



FINISHES & POPULAR MODEL CODES

Colour Finishes To Front/ Side Panels

Option Description. 11 alternative choices of durable steel, colour & wood effect finishes for plate dispenser unit front/ end panels,



Model GAPD2
& Option GGRENCHA2 Shown



Ocean Blue (BS 18C37)
Code Description Capacity
GBLUECHA2 Glide Blue Fascia Ends - Plate Disp. 2-1Gn



Goosewing Light Grey (BS 10A05)
Code Description Capacity
GGREYCHA2 Glide Grey Fascia Ends - Plate Disp. 2-1Gn



Poppy Red (BS 04E5B)
Code Description Capacity
GPREDCHA2 Glide Red Fascia Ends - Plate Disp. 2-1Gn



White (BS 00E55)
Code Description Capacity
GWHITCHA2 Glide White Fascia Ends - Plate Disp. 2-1Gn



Wood Grain Effect Panels DL85 Walnut Finish
Code Description Capacity
GWALNCHA2 Glide Walnut Fascia Ends - Plate Disp. 2-1Gn



Satin S/Steel (430 gd.)
Code Description Capacity
GSTLCHA2 Glide S/Steel Fascia Ends - Plate Disp. 2-1Gn



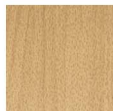
Forest Green/Heritage (RAL 6002)
Code Description Capacity
GGRENCHA2 Glide Green Fascia Ends - Plate Disp. 2-1Gn



Buttermilk Cream/ Honesty (BS 10C31)
Code Description Capacity
GCREMCHA2 Glide Cream Fascia Ends - Plate Disp. 2-1Gn



Black (BS 00E53)
Code Description Capacity
GBLAKCHA2 Glide Black Fascia Ends - Plate Disp. 2-1Gn

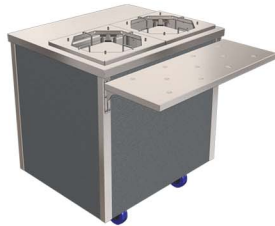


Wood Grain Effect Panels DL76 Beech Finish
Code Description Capacity
GBEECCHA2 Glide Beech Fascia Ends - Plate Disp. 2-1Gn



Wood Grain Effect Panels DL84 Oak Finish
Code Description Capacity
GOAKCHA2 Glide Oak Fascia Ends - Plate Disp. 2-1Gn

POPULAR MODEL CODES

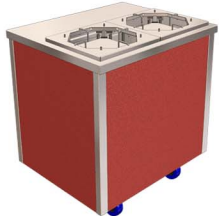
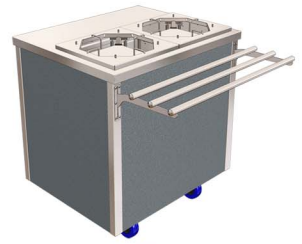


Glide Twin Amb. Plate Dispenser (& Tray Slide)

Model Code	Option Code	Description	Gn Size
GAPD2	GSTS2	Glide Amb. Plate Disp. & T/Slide	2-1

Glide Twin Amb. Plate Dispenser (& Tray Rail)

Model Code	Option Code	Description	Gn Size
GAPD2	GTTS2	Glide Amb. Plate Disp. & T/Rail	2-1

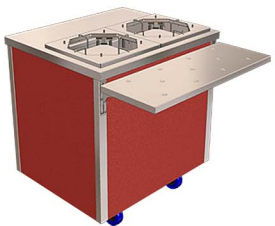
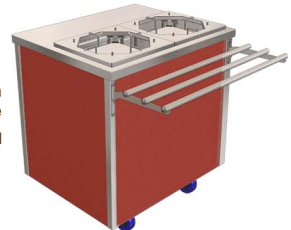


Glide Twin Amb. Plate Dispenser (& Colour Finish - Red)

Model Code	Option Code	Description	Gn Size
GAPD2	GPREDCHA2	Glide Amb. Plate Disp.+(Red)	2-1

Glide Twin Amb. Plate Dispenser (& Tray Rail & Colour Finish - Red)

Model Code	Option Code	Option Code	Description	Gn Size
GAPD2	GTTS2	GPREDCHA2	Glide Amb. Plate Disp./ T.Rail +(Red)	2-1

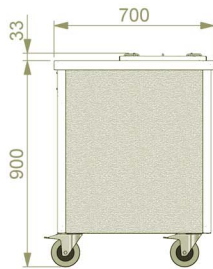
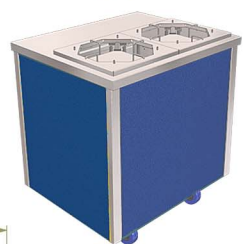


Glide Twin Amb. Plate Dispenser (& Tray Slide & Colour Finish - Red)

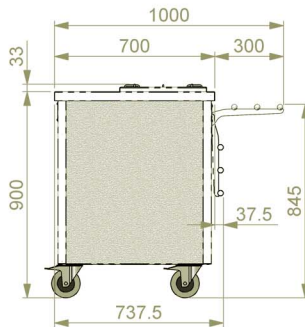
Model Code	Option Code	Option Code	Description	Gn Size
GAPD2	GSTS2	GPREDCHA2	Amb. Plate Disp./ T.Slide+(Red)	2-1

Glide Twin Amb. Plate Dispenser (& Colour Finish - Blue)

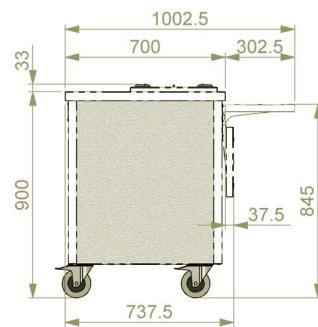
Model Code	Option Code	Description	Gn Size
GAPD2	GBLUECHA2	Sanitising Unit +(Blue)	2-1



Glide Twin Amb. Plate Dispenser



Glide Twin Amb. Plate Disp. & Tray Rail



Glide Twin Amb. Plate Disp. & Tray Slide

