



**Self Help Cold Patiss. 1200mm (Fixed Back)**  
(Air In Customer/ Out Op.Side Flue)



**Self Help Cold Patiss. 1200mm (Rear Doors)**  
(Air In Customer/ Out Op. Side)

## ABOUT

The energy efficient, environmentally friendly fan blown cold patisserie is part of the Kubus range of 'drop in' serve over height patisseries - a choice of cold, hot & ambient commercial drop in displays that fit in servery counter worktops, to suit either self help or assisted service retail operations.

The cold patisserie circulates a constant stream of cold air throughout the display area, maintaining pre-chilled food between 2- 5 degrees C, just right for your fruit and vegetables, sandwiches, yoghurts, salads and cold drinks.

This flexible self contained display is available in five different lengths, with rear doors or a fixed back panel to position the equipment around your serving space.

The display comprises four chilled display levels each illuminated by 4000K colour LED lighting.

Digital temperature control, auto defrost & the auto condensate evaporation tray allow 24 hour operation if required. All Kubus cold patisseries use a highly efficient, naturally occurring hydrocarbon refrigerant gas within hermetically sealed condensing units, which reduce energy consumption and your carbon footprint !

## OPTIONS

### (PAF2) Airflow Kit: (In/Out Operator Side)

Fan assisted venting duct avoids air grills to customer side of counter. Allows airflow venting in/ out operator side. Factory fit.

### (PAF1) Airflow Kit: (In/Out Customer Side)

(All models). Fan assisted venting duct that allows both air grills to customer side e.g. island counter/ where rear vent grille not suited. Allows airflow venting in/ out customer side. Factory fit.

### Insulated Night Blind.

A factory fitted, energy saving insulated pull down night blind is available with hook fastening.

### Controls To Customer Side (Self Help Rear Door Models).

Allows controls to customer side where operator side position is not suited.

Option PAF2



## FEATURES

Download All Technical Drawings From [www.cedfabsltd.co.uk](http://www.cedfabsltd.co.uk)

### Model Sizes.

The Kubus self help or assisted service drop in cold patisserie is an open or closed glass front cold patisserie, available in 600mm, 900mm, 1200mm, 1500mm & 1800mm lengths.

### 3 Tier Shelving & Deck Storage Capacity.

The display features 3 chilled glass shelves (adjustable in height & angle) & chilled s/ steel bottle storage deck below. The toughened glass shelving has product stops & 40mm(h) ticket strip holder to the front edge of each shelf.

### LED Lighting.

Canopy & shelf lighting in a low energy LED fitting with opaque cover, colour 4000k.

### Model Type: Self Help Drop In Cold Patisserie (Rear Doors).

Re-stocking access is by energy efficient, side hinged double glazed rear doors.

Cold Airflow: In Customer/ Out Operator Side (All Sizes)

### Model Type: Self Help Drop In Cold Patisserie (Fixed Back).

This drop in cold patisserie is supplied for wall sited use with front control panel and stainless steel back panel for positioning in an alcove, a wall sited counter or back to back, forming a central island counter grab and go station !

Cold Airflow: In Customer/ Out Operator Side Via Rear Worktop Mounted Grille/ Rear Cradle Flue (All Sizes)

### Model Type: Assisted Service Drop In Cold Patisserie (Rear Doors).

Features a full glazed front screen that tilts forward for cleaning. Re-stocking access is through the energy efficient, side hinged double glazed rear doors.

Cold Airflow: In Customer/ Out Operator Side (All Sizes).

### Panoramic Glass Side & Top Panels

Top glass allows for serve over operation & side glass panels add natural lighting.

### Model Dimensions.

600/ 900/ 1200/ 1500 & 1800 (L) x 750 (D). 843mm (H) Above Wktp. 1408mm (H) O/all.

### Refrigeration Type.

Integral fan blown, hydrocarbon r290 energy efficient refrigeration.

### System Design.

Auto defrost with 24 hour operation & digital temperature control.

### Temperature Performance.

0°C to 5°C (max 27°C ambient 55% humidity).

### Auto Drip Tray.

Integral auto evaporator condensate drip tray (float & micro switch). No site drainage req.

### Finishes.

Worktop & rear frame 430gd s/steel, deck area 304gd s/steel, toughened glass shelving.

### Power Supply.

Supplied with 3m lead & 13 amp UK plug (13A 230v 50Hz).

### Environmental Benefits.

Hydrocarbon refrigeration system (r290) has low global warming potential (GWP) & zero ozone depletion potential (ODP)

**Equipment Conformity.** CE & UKCA Certified equipment.

## Self Help (Drop In) Cold Patisserie (Rear Doors)

Code	Description	O/all Dims. (L x D x H mm)	Refrig. Airflow Air In/Out	Weight (kg)	Power Rating (kW)
KPC6HTD	Kubus S.Help D/In Cold Patiss. (R.Doors) 600	600 x 750 x 843/1408	In Cust./ Out Op. Side	141	1.32
KPC9HTD	Kubus S.Help D/In Cold Patiss. (R.Doors) 900	900 x 750 x 843/1408	In Cust./ Out Op. Side	188	1.54
KPC12HTD	Kubus S.Help D/In Cold Patiss. (R.Doors) 1200	1200 x 750 x 843/1408	In Cust./ Out Op. Side	240	1.68
KPC15HTD	Kubus S.Help D/In Cold Patiss. (R.Doors) 1500	1500 x 750 x 843/1408	In Cust./ Out Op. Side	294	1.71
KPC18HTD	Kubus S.Help D/In Cold Patiss. (R.Doors) 1800	1800 x 750 x 843/1408	In Cust./ Out Op. Side	346	1.76

**Model Description.** Kubus self help drop in cold patiss. rear doors, 6/9/12/15/1800 (l) x 750(d) x 843/1408 (h), chilled glass shelves (3) c/w ticket strips, chilled deck area (1), fan blown, hydrocarbon r290 energy efficient refrigeration, LED lighting each tier, colour 4000k. Automatic defrost, 24 hour operation, auto evaporator condensate tray, glazed side panels & d/ glazed rear doors. Underslung condensing unit. Controls to operator side. Std. airflow in customer/ air out operator side. 13A 230v UK plug top, 3m lead.

## Self Help (Drop In) Cold Patisserie (Fixed Back)

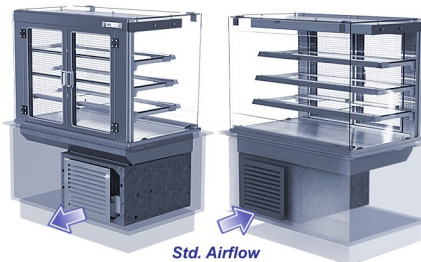
Code	Description	O/all Dims. (L x D x H mm)	Refrig. Airflow Air In/Out	Weight (kg)	Power Rating (kW)
KPC6FBHTD	Kubus S.Help D/In Cold Patiss. (F.Back) 600	600 x 750(+75) x 843/1408	In Cust./ Out Rear Wktp	141	1.32
KPC9FBHTD	Kubus S.Help D/In Cold Patiss. (F.Back) 900	900 x 750(+75) x 843/1408	In Cust./ Out Rear Wktp	188	1.54
KPC12FBHTD	Kubus S.Help D/In Cold Patiss. (F.Back) 1200	1200 x 750(+75) x 843/1408	In Cust./ Out Rear Wktp	240	1.68
KPC15FBHTD	Kubus S.Help D/In Cold Patiss. (F.Back) 1500	1500 x 750(+75) x 843/1408	In Cust./ Out Rear Wktp	294	1.71
KPC18FBHTD	Kubus S.Help D/In Cold Patiss. (F.Back) 1800	1800 x 750(+75) x 843/1408	In Cust./ Out Rear Wktp	346	1.76

**Model Description.** Kubus self help drop in cold patiss. fixed back panel, 6/9/12/15/1800 (l) x 750(d) x 843/1408 (h), chilled glass shelves (3) c/w ticket strips, chilled deck area (1), fan blown, hydrocarbon r290 energy efficient refrigeration, LED lighting each tier, colour 4000k. Automatic defrost, 24 hour operation, auto evaporator condensate tray, glazed side panels. Underslung condensing unit. Controls to customer side. Std. airflow in customer/ air out via rear worktop mounted grill & cradle flue. 13A 230v UK plug top, 3m lead.

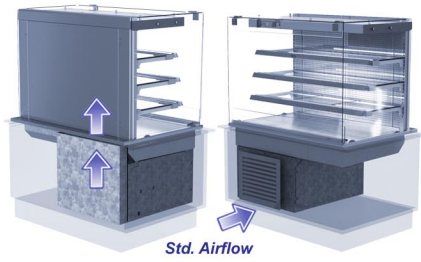
## Assisted Service (Drop In) Cold Patisserie (Rear Doors)

Code	Description	O/all Dims. (L x D x H mm)	Refrig. Airflow Air In/Out	Weight (kg)	Power Rating (kW)
KPC6ASHTD	Kubus A.Serve D/In Cold Patiss. (R.Doors) 600	600 x 750 x 843/1408	In Cust./ Out Op. Side	144	1.17
KPC9ASHTD	Kubus A.Serve D/In Cold Patiss. (R.Doors) 900	900 x 750 x 843/1408	In Cust./ Out Op. Side	191	1.36
KPC12ASHTD	Kubus A.Serve D/In Cold Patiss. (R.Doors) 1200	1200 x 750 x 843/1408	In Cust./ Out Op. Side	243	1.57
KPC15ASHTD	Kubus A.Serve D/In Cold Patiss. (R.Doors) 1500	1500 x 750 x 843/1408	In Cust./ Out Op. Side	298	1.71
KPC18ASHTD	Kubus A.Serve D/In Cold Patiss. (R.Doors) 1800	1800 x 750 x 843/1408	In Cust./ Out Op. Side	349	1.76

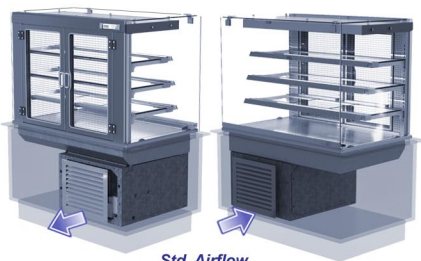
**Model Description.** Kubus ass. serve drop in cold patiss. rear doors, 6/9/12/15/1800 (l) x 750(d) x 843/1408 (h), chilled glass shelves (3) c/w ticket strips, chilled deck area (1), fan blown, hydrocarbon r290 energy efficient refrigeration, LED lighting each tier, colour 4000k. Automatic defrost, 24 hour operation, auto evaporator condensate tray, full height tilting front glass, glazed side panels & d/ glazed rear doors. Underslung condensing unit. Controls to operator side. Std. airflow in customer/ air out operator side. 13A 230v UK plug top, 3m lead.



Std. Airflow



Std. Airflow



Std. Airflow

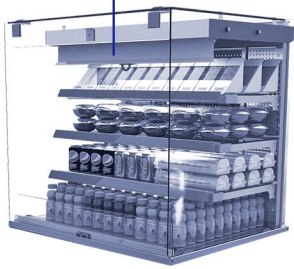


# Kubus (Drop In) Cold Patisserie

## OPTIONS & DIMENSIONS



Option: Night Blind



### Night Blind (Factory Fit)

Code	Description	For Model (Code)	Dimensions (L x H mm)	Weight (kg)
KNB6	Night Blind (Self Help Patiss. Doors)	KPC6HTD	545 x 780	0.5
KNB9	Night Blind (Self Help Patiss. Doors)	KPC9HTD	845 x 780	1
KNB12	Night Blind (Self Help Patiss. Doors)	KPC12HTD	1145 x 780	1
KNB15	Night Blind (Self Help Patiss. Doors)	KPC15HTD	1445 x 780	1.4
KNB18	Night Blind (Self Help Patiss. Doors)	KPC18HTD	1745 x 780	1.7
KNB6FB	Night Blind (Self Help Patiss. F.Back)	KPC6FBHTD	545 x 780	0.5
KNB9FB	Night Blind (Self Help Patiss. F.Back)	KPC9FBHTD	845 x 780	1
KNB12FB	Night Blind (Self Help Patiss. F.Back)	KPC12FBHTD	1145 x 780	1
KNB15FB	Night Blind (Self Help Patiss. F.Back)	KPC15FBHTD	1445 x 780	1.4
KNB18FB	Night Blind (Self Help Patiss. F.Back)	KPC18FBHTD	1745 x 780	1.7

### (Self Help Drop In Cold Patisserie)

**Weight Option Description.**  
 0.5 Insulated pull down night blind, hook fastening, energy saving. Factory fit.

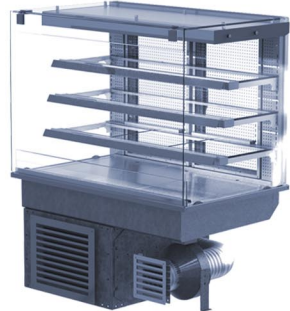


### (PAF2) Airflow Kit (In/ Out Operator Side)

Code	Description	Power +(kW)	Weight +(kg)	For Model Codes
PAF2	Fan Assisted Airflow Kit (In/Out Op. Side).	0.07	3	KPC6HTD, KPC6FBHTD, KP66ASHTD, KPC9HTD, KPC9FBHTD, KPC9ASHTD, KPC12HTD, KPC12FBHTD, KPC12ASHTD, KPC15HTD, KPC15FBHTD, KPC15ASHTD, KPC18HTD, KPC18FBHTD, KPC18ASHTD.

### (All Drop In Cold Patisseries)

**Option Description.**  
 Fan assisted Ø 100 metalised flexi venting duct with inline fan, avoids air grills to customer side of counter. Allows airflow venting in/ out op. side. Factory fit. Inline fan Ø 325.



### (PAF1) Airflow Kit (In/ Out Customer Side)

Code	Description	Power +(kW)	Weight +(kg)	For Model Codes
PAF1	Fan Assisted Airflow Kit (In/Out Customer.Side).	0.07	3	KPC6HTD, KPC6FBHTD, KP66ASHTD, KPC9HTD, KPC9FBHTD, KPC9ASHTD, KPC12HTD, KPC12FBHTD, KPC12ASHTD, KPC15HTD, KPC15FBHTD, KPC15ASHTD, KPC18HTD, KPC18FBHTD, KPC18ASHTD.

### (All Drop In Cold Patisseries)

**Option Description.**  
 Fan assisted Ø 100 metalised flexi venting duct with inline fan that allows both air grills to customer side e.g. island counter/ or where rear vent grille (doors models) or rear worktop grille (fix back models) not suited. Factory fit. Inline fan Ø 325.

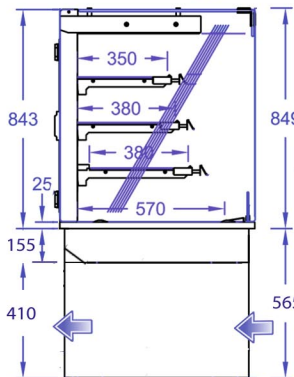


### Gantry Controls (To Customer Side)

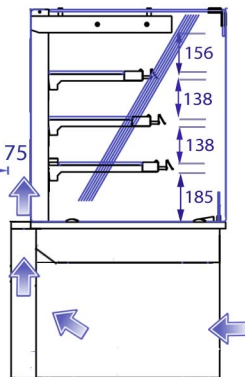
Code	Description	For Model (Code)
KCUSP6	600 Controls To Customer Side (Self Help Patiss. Doors)	KPC6HTD
KCUSP9	900 Controls To Customer Side (Self Help Patiss. Doors)	KPC9HTD
KCUSP12	1200 Controls To Customer Side (Self Help Patiss. Doors)	KPC12HTD
KCUSP15	1500 Controls To Customer Side (Self Help Patiss. Doors)	KPC15HTD
KCUSP18	1800 Controls To Customer Side (Self Help Patiss. Doors)	KPC18HTD

### (Self Help Drop In Cold Patisserie)

**Option Description.**  
 Controls to customer side gantry: In lieu of std. operator side position.

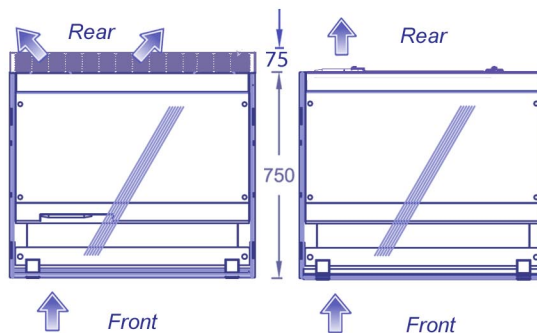


Drop In Cold Patiss. (Rear Door) - KPC9HTD



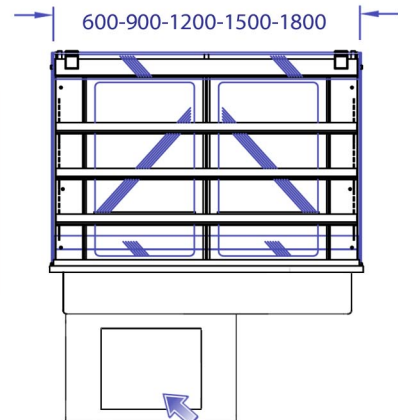
Drop In Cold Patiss. (Fix Back) - KPC9FBHTD

### Standard Airflows



Drop In Cold Patiss. (Fix Back) 900-1200-1500-1800

Drop In Cold Patiss. (Rear Doors) 900-1200-1500-1800



Drop In Cold Patiss. (Rear Door) - KPC12HTD

