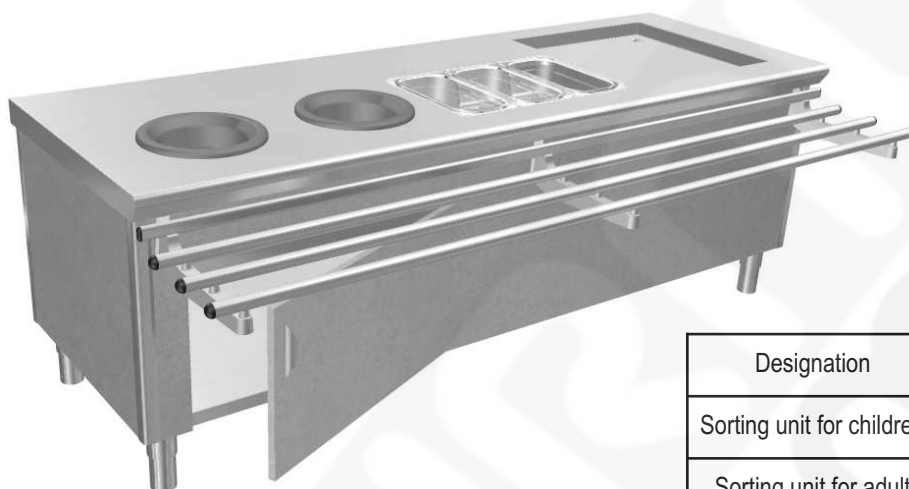


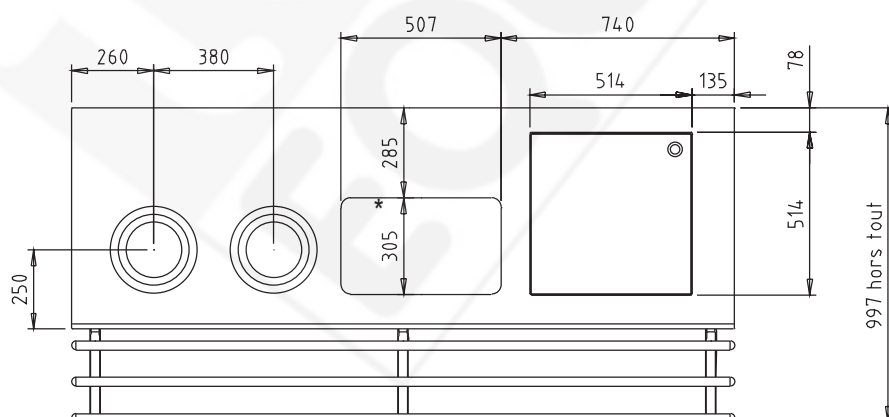
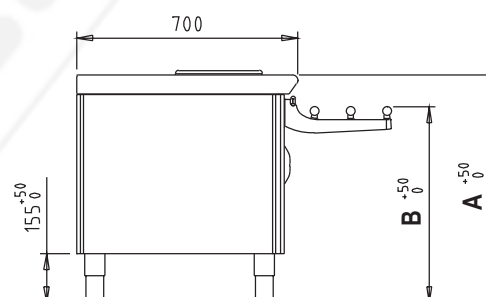
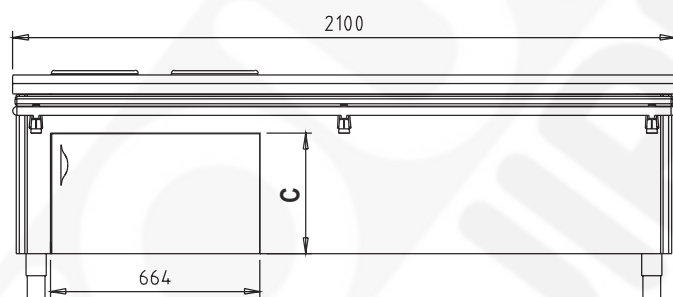
SORTING UNIT FOR CHILDREN

Technical characteristics:

- Stainless steel top 1.5 mm thick.
- Two waste disposal holes with rubber flange Ø 190 / 280 mm.
- Three GN 1/3 polycarbonate cutlery pans 150 mm deep (supplied)..
- One recess for basket with diamond point base and discharge (delivered with drain plug and plastic trap).
- Rounded front edge.
- Tray rail consisting of 4 tube of stainless steel fixed on lacquered aluminium brackets.
- Choice of cladding for sides and front from the 21 colours of the Eurodekor range by Egger.
- Holder surface for bin bags.
- Hinged door under tray rail for access to bin bags.



Designation	Reference	net weight	A	B	C
Sorting unit for children	507 540	116 kg	720	620	425
Sorting unit for adult	507 541	130 kg	900	790	595



* GN 1/3 pans not represented