



## GLIDE DINING CARTS - PRICE LIST 2025

BAIN MARIE · CERAN · CHILLED WELL · MULTIDECK · PLUS MANY MORE

# Glide Dining Carts

The Glide Dining Carts range of modular heated, ambient and refrigerated systems creates a versatile, mobile servery counter system. Manufactured in stainless steel, the units feature plastisol front and panels that are aesthetically pleasing yet durable.

The wide array of features means that the carts can be customized to meet the individual needs of your business or institution. The carts can be either free standing / wall sited and combined together to form a fully functional angled or straight servery area. A variety of sizes, gantry options, and wall-sited alternatives ensure that no space is wasted.



## Contents

CONTROL PANELS / GANTRY PROFILES	3
BAIN MARIE HOT CUPBOARD (DRY HEAT)	4
BAIN MARIE HOT CUPBOARD (DRY HEAT) (WALL SITED)	5
BAIN MARIE HOT CUPBOARD (WET & DRY HEAT)	6
BAIN MARIE HOT CUPBOARD (WET & DRY HEAT) (WALL SITED)	7
CERAN TOP HOT CUPBOARD	8
CERAN TOP HOT CUPBOARD (WALL SITED)	9
HOT CUPBOARD PLAIN TOP	10
HOT CUPBOARD PLAIN TOP (WALL SITED)	11
SOUP STATION (REVERSIBLE TOP)	12
HEATED TWIN PLATE DISPENSER	13
EUTECTIC COLD WELL	14
EUTECTIC COLD WELL (WALL SITED)	15
REFRIGERATED COLD WELL	16
REFRIGERATED COLD WELL CONTINUED	17
REFRIGERATED COLD MULTIDECK	18
REFRIGERATED COLD MULTIDECK (SECURITY SHUTTER)	19
AMBIENT MULTIDECK	20
AMBIENT MULTIDECK (SECURITY SHUTTER)	21
AMBIENT TWIN PLATE DISPENSER	22
CASHIER SECTIONS	23
CUTLERY & TRAY PICK UP UNIT	24
SANTISING DISPENSER STATION	25
AMBIENT CUPBOARD PLAIN TOP	26
AMBIENT CUPBOARD PLAIN TOP (WALL SITED)	27
45° & 90° CORNER INFILL UNITS	28
LOW HEIGHT TRAY PICK UP	29
WASTE CLEARING TROLLEY	29
MCB STATION	30
VISUAL EXAMPLE	31
SITE MAPS & CONTACT DETAILS	32

# Control Panels



AMBIENT UNITS CONTROLLER



CERAN TOP HOT CUPBOARD CONTROLLER



COLD UNITS CONTROLLER



CERAN TOP HOT CUPBOARD + GANTRY CONTROLLER



AMBIENT GANTRY UNITS CONTROLLER



WET / DRY BAIN MARIE HOT CUPBOARD CONTROLLER



DRY BAIN MARIE + HOT CUPBOARD CONTROLLER



WET / DRY BAIN MARIE HOT CUPBOARD + GANTRY CONTROLLER



DRY BAIN MARIE + HOT CUPBOARD + GANTRY CONTROLLER

# Gantry Range



HOT + COLD STANDARD GANTRY - SELF HELP POSITION



COLD DELI GANTY - ASSISTED SERVICE ONLY

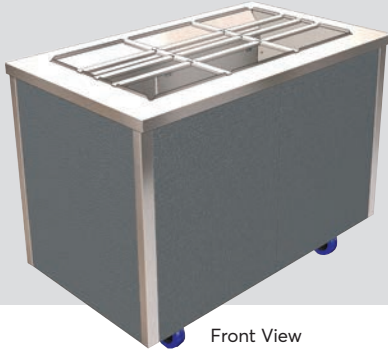


HOT + COLD STANDARD GANTRY - ASSISTED SERVICE POSITION



HOT + COLD ISLAND GANTRY - SELF HELP SERVICE ONLY

# Bain Marie Hot Cupboard (Dry Heat)



Front View

The bain marie hot cupboard (no gantry) features a bain marie section with removable container supports, formed in the worktop to accept up to 150mm deep GN containers (not included). Heated by suspended elements & residual heat from the hot cupboard. The hot cupboard uses fan blown heating to evenly distribute heat around the cupboard. Behind lift-off rear sliding s/steel cupboard doors, are two tiers of removable, height adjustable grid shelves for plate/container storage.



Rear View

BASE MODEL

Model	Weight (kg)	Dimensions (LxDxH mm)	GN Capacity (1/1)	Total Power (No Gantry)(kW)	Total Power (+ Hot Gantry)(kW)	List Price
GHBM2	45	825 x 700 x 900	2	2.58	2.08	£2,073
GHBM3	67	1175 x 700 x 900	3	2.83	2.53	£2,372
GHBM4	90	1525 x 700 x 900	4	2.83	2.73	£2,654
GHBM5	112	1875 x 700 x 900	5	2.83	2.93	£2,922

All models supplied with 3m lead & 13amp UK plug 13A | 230V | 50Hz

\*All option prices are to be added onto base unit prices for total unit price

## Gantry Options



Hot gantries s/steel, reversible curved glass sneeze screen, end glass, self help/ ass. serve use, + 397(h) above worktop, end glass, fitted with 200w quartz infra-red jacketed safety lamps.

HEATED GANTRY

Option	Weight (kg)	Dimensions (LxDxH mm)	GN Capacity (1/1)	Power (kW)	List Price
GHG2	7	825 x 700 x 397	2	0.4	£856
GHG3	9	1175 x 700 x 397	3	0.6	£980
GHG4	12	1525 x 700 x 397	4	0.8	£1,114
GHG5	16	1875 x 700 x 397	5	1.0	£1,256



Hot island gantry, s/steel, double curved glass sneeze screen, end glass, self help, + 397(h) above worktop, end glass, fitted with 200w quartz infra-red jacketed safety lamps.

HEATED ISLAND GANTRY

Option	Weight (kg)	Dimensions (LxDxH mm)	GN Capacity (1/1)	Power (kW)	List Price
GHIG2	9	825 x 700 x 397	2	0.4	£973
GHIG3	11	1175 x 700 x 397	3	0.6	£1,271
GHIG4	13	1525 x 700 x 397	4	0.8	£1,500
GHIG5	18	1875 x 700 x 397	5	1.0	£1,673

## Trayslide Options



SOLID DROP DOWN

Option	Dimensions (LxD mm)	List Price
GSTS2	825 x 302	£174
GSTS3	1175 x 302	£194
GSTS4	1525 x 302	£211
GSTS5	1875 x 302	£228



TUBULAR DROP DOWN

Option	Dimensions (LxD mm)	List Price
GTTS2	825 x 298	£221
GTTS3	1175 x 298	£283
GTTS4	1525 x 298	£321
GTTS5	1875 x 298	£375

## Height Options

Base units as standard are 900mm high

JUNIOR HEIGHTS	Option	Dimensions (H mm)	List Price
	G850H	850	£0
	G800H	800	£0

\*Extended lead times

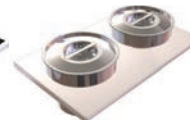
## Insert Options



CARVING GCINS1



GLASS GHINS1



SOUP GSUPI4

Option	Dimensions (LxDxH mm)	List Price
GCINS1	325 x 530 x 24	£235
GHINS1	324 x 520 x 27	£235
GSUPI4	325 x 520 x 64	£235

## Colour Options

\*All units as standard come in Merlin Grey.

\*Use code below with either 2,3,4 or 5 on the end depending on the size of the unit chosen.



Black Light Grey White Buttermilk Blue Red Green Satin Steel Oak Beech Walnut

GBLAKCHA2-5 GGREYCHA2-5 GWHITCHA2-5 GCREMCHA2-5 GBLUECHA2-5 GPREDCHA2-5 GGRENCHA2-5 GSSTLCHA2-5 GOAKCHA2-5 GBEECCHA2-5 GWALNCHA2-5

£0 £0 £0 £0 £0 £0 £0 £0 £151 £151 £151

# Bain Marie Hot Cupboard (Dry Heat) (Wall Sited)



Front View



Rear View

The wall sited bain marie hot cupboard fits neatly against walls, in alcoves, recesses, or back to back with island units. The bain marie hot cupboard (no gantry) features a bain marie section with removable container supports, formed in the worktop to accept up to 150mm deep GN containers (not included). Heated by suspended elements & residual heat from the hot cupboard. The hot cupboard uses fan blown heating to evenly distribute heat around the cupboard. Behind lift-off sliding s/steel cupboard doors, are two tiers of removable, height adjustable grid shelves for plate/container storage.



DOWNLOAD ALL TECHNICAL DRAWINGS from [www.cedfabsltd.co.uk](http://www.cedfabsltd.co.uk)

All models supplied with 3m lead & 13amp UK plug 13A | 230V | 50Hz

Model	Weight (kg)	Dimensions (LxDxH mm)	GN Capacity (1/1)	Total Power (No Gantry)(kW)	Total Power (+ Hot Gantry)(kW)	List Price
GWSHBM2	45	825 x 700 x 900	2	2.58	2.08	£2,073
GWSHBM3	67	1175 x 700 x 900	3	2.83	2.53	£2,372
GWSHBM4	90	1525 x 700 x 900	4	2.83	2.73	£2,654
GWSHBM5	112	1875 x 700 x 900	5	2.83	2.93	£2,922

BASE MODEL

\*All option prices are to be added onto base unit prices for total unit price

## Gantry Options



Wall sited hot gantries, s/steel, curved glass, sneeze screen, end glass, self help use only, + 397(h) above worktop, fitted with 200W quartz infra-red jacketed safety lamps.

HEATED GANTRY

Option	Weight (kg)	Dimensions (LxDxH mm)	GN Capacity (1/1)	Power (kW)	List Price
GWSHG2	7	825 x 700 x 397	2	0.4	£856
GWSHG3	9	1175 x 700 x 397	3	0.6	£980
GWSHG4	12	1525 x 700 x 397	4	0.8	£1,114
GWSHG5	16	1875 x 700 x 397	5	1.0	£1,256



## Trayslide Options



SOLID DROP DOWN

Option	Dimensions (LxD mm)	List Price
GSTS2	825 x 302	£174
GSTS3	1175 x 302	£194
GSTS4	1525 x 302	£211
GSTS5	1875 x 302	£228



TUBULAR DROP DOWN

Option	Dimensions (LxD mm)	List Price
GTTS2	825 x 298	£221
GTTS3	1175 x 298	£283
GTTS4	1525 x 298	£321
GTTS5	1875 x 298	£375

## Height Options

Base units as standard are 900mm high

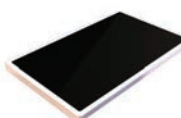
JUNIOR HEIGHTS	Option	Dimensions (H mm)	List Price
	G850H	850	£0
	G800H	800	£0

\*Extended lead times

## Insert Options



CARVING GCINS1



GLASS GHINS1



SOUP GSUPI4

Option	Dimensions (LxDxH mm)	List Price
GCINS1	325 x 530 x 24	£235
GHINS1	324 x 520 x 27	£235
GSUPI4	325 x 520 x 64	£235

## Colour Options

\*All units as standard come in Merlin Grey.

\*Use code below with either 2,3,4 or 5 on the end depending on the size of the unit chosen.

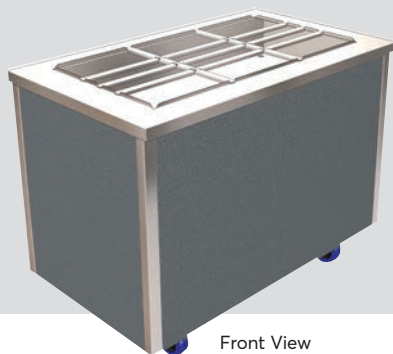


Black Light Grey White Buttermilk Blue Red Green Satin Steel Oak Beech Walnut

GBLAKCHA2-5 GGREYCHA2-5 GWHITCHA2-5 GREMCHA2-5 GBLUECHA2-5 GPREDCHA2-5 GGRENCHA2-5 GSSTLCHA2-5 GOAKCHA2-5 GBEECCHA2-5 GWALNCHA2-5

£0 £0 £0 £0 £0 £0 £0 £0 £151 £151 £151

# Bain Marie Hot Cupboard (Wet & Dry Heat)



Front View

The wet & dry bain marie hot cupboard (no gantry) features a bain marie section with removable container supports, formed in the worktop to accept up to 150mm deep GN containers (not included). The GN pans can be heated by either dry heat or by water from a filled tank with suspended heat elements underneath. A water level fill indicator & manual swivel drain are included. The hot cupboard underneath uses fan blown heated to evenly distribute heat around the cupboard. Behind lift-off rear sliding s/steel cupboard doors are two tiers or removable, height adjustable grid shelves for plate/container storage.



Rear View

All models supplied with 3m lead & 13amp UK plug 13A | 230V | 50Hz . Models with hot gantry option above 3kW are fitted with either 16A or 32A commando plug.

**BASE MODEL**

Model	Weight (kg)	Dimensions (LxDxH mm)	GN Capacity (1/1)	Total Power (No Gantry)(kW)	Total Power (+ Hot Gantry)(kW)	List Price
GHBMW2	49	825 x 700 x 900	2	2.43	2.83 (13A)	£2,442
GHBMW3	69	1175 x 700 x 900	3	2.93	3.53 (16A)	£2,741
GHBMW4	92	1525 x 700 x 900	4	2.93	3.73 (32A)	£3,022
GHBMW5	114	1875 x 700 x 900	5	2.93	3.93 (32A)	£3,291

\*All option prices are to be added onto base unit prices for total unit price

## Gantry Options



Hot gantries s/steel, reversible curved glass sneeze screen, end glass, self help/ ass. serve use, + 397(h) above worktop, end glass, fitted with 200w quartz infra-red jacketed safety lamps.

**HEATED GANTRY**

Option	Weight (kg)	Dimensions (LxDxH mm)	GN Capacity (1/1)	Power (kW)	List Price
GHG2	7	825 x 700 x 397	2	0.4	£856
GHG3	9	1175 x 700 x 397	3	0.6	£980
GHG4	12	1525 x 700 x 397	4	0.8	£1,114
GHG5	16	1875 x 700 x 397	5	1.0	£1,256



Hot island gantry, s/steel, double curved glass sneeze screen, end glass, self help, + 397(h) above worktop, end glass, fitted with 200w quartz infra-red jacketed safety lamps.

**HEATED ISLAND GANTRY**

Option	Weight (kg)	Dimensions (LxDxH mm)	GN Capacity (1/1)	Power (kW)	List Price
GHIG2	9	825 x 700 x 397	2	0.4	£973
GHIG3	11	1175 x 700 x 397	3	0.6	£1,271
GHIG4	13	1525 x 700 x 397	4	0.8	£1,500
GHIG5	18	1875 x 700 x 397	5	1.0	£1,673

## Trayslide Options



**SOLID DROP DOWN**

Option	Dimensions (LxD mm)	List Price
GSTS2	825 x 302	£174
GSTS3	1175 x 302	£194
GSTS4	1525 x 302	£211
GSTS5	1875 x 302	£228



**TUBULAR DROP DOWN**

Option	Dimensions (LxD mm)	List Price
GTTS2	825 x 298	£221
GTTS3	1175 x 298	£283
GTTS4	1525 x 298	£321
GTTS5	1875 x 298	£375

## Height Options

Base units as standard are 900mm high

JUNIOR HEIGHTS	Option	Dimensions (H mm)	List Price
	G850H	850	£0
	G800H	800	£0

\*Extended lead times

## Insert Options



**CARVING GCINS1**



**GLASS HINS1**



**SOUP GSUPI4**

Option	Dimensions (LxDxH mm)	List Price
GCINS1	325 x 530 x 24	£235
GHINS1	324 x 520 x 27	£235
GSUPI4	325 x 520 x 64	£235

## Colour Options

\*All units as standard come in Merlin Grey.

\*Use code below with either 2,3,4 or 5 on the end depending on the size of the unit chosen.



Black Light Grey White Buttermilk Blue Red Green Satin Steel Oak Beech Walnut

GBLAKCHA2-5 GGREYCHA2-5 GWHITCHA2-5 GREMCHA2-5 GBLUECHA2-5 GPREDCHA2-5 GGRENCHA2-5 GSSTLCHA2-5 GOAKCHA2-5 GBEECCHA2-5 GWALNCHA2-5

£0 £0 £0 £0 £0 £0 £0 £0 £0 £151 £151 £151

# Bain Marie Hot Cupboard (Wet & Dry Heat) (Wall Sited)



Front View



Rear View

The wall sited wet & dry bain marie hot cupboard fits neatly against walls, in alcoves, recesses, or back to back with island units. The wet & dry bain marie hot cupboard (no gantry) features a bain marie section with removable container supports, formed in the worktop to accept up to 150mm deep GN containers (not included). The GN pans can be heated by either dry heat or by water from a filled tank with suspended heat elements underneath. A water level fill indicator & manual swivel drain are included. The hot cupboard underneath uses fan blown heated to evenly distribute heat around the cupboard. Behind lift-off rear sliding s/steel cupboard doors are two tiers or removable, height adjustable grid shelves for plate/container storage.



DOWNLOAD ALL  
TECHNICAL DRAWINGS  
from [www.cedfabsltd.co.uk](http://www.cedfabsltd.co.uk)

All models supplied with 3m lead & 13amp UK plug 13A | 230V | 50Hz

BASE MODEL	Model	Weight (kg)	Dimensions (LxDxH mm)	GN Capacity (1/1)	Total Power (No Gantry)(kW)	Total Power (+ Hot Gantry)(kW)	List Price
	GWSHBMW2	45	825 x 700 x 900	2	2.43	2.83 (13A)	£2,442
GWSHBMW3	67	1175 x 700 x 900	3	2.93	3.53 (16A)	£2,741	
GWSHBMW4	90	1525 x 700 x 900	4	2.93	3.73 (32A)	£3,022	
GWSHBMW5	112	1875 x 700 x 900	5	2.93	3.93 (32A)	£3,291	

\*All option prices are to be added onto base unit prices for total unit price

## Gantry Options



Wall sited hot gantries, s/steel, curved glass, sneeze screen, end glass, self help use only, + 397(h) above worktop, fitted with 200W quartz infra-red jacketed safety lamps.

HEATED GANTRY

Option	Weight (kg)	Dimensions (LxDxH mm)	GN Capacity (1/1)	Power (kW)	List Price
GWSHG2	7	825 x 700 x 397	2	0.4	£856
GWSHG3	9	1175 x 700 x 397	3	0.6	£980
GWSHG4	12	1525 x 700 x 397	4	0.8	£1,114
GWSHG5	16	1875 x 700 x 397	5	1.0	£1,256



## Trayslide Options



SOLID  
DROP DOWN

Option	Dimensions (LxD mm)	List Price
GSTS2	825 x 302	£174
GSTS3	1175 x 302	£194
GSTS4	1525 x 302	£211
GSTS5	1875 x 302	£228



TUBULAR  
DROP DOWN

Option	Dimensions (LxD mm)	List Price
GTTS2	825 x 298	£221
GTTS3	1175 x 298	£283
GTTS4	1525 x 298	£321
GTTS5	1875 x 298	£375

## Height Options

Base units as standard are 900mm high.

JUNIOR HEIGHTS	Option	Dimensions (H mm)	List Price
	G850H	850	£0
	G800H	800	£0

\*Extended lead times

## Insert Options



CARVING  
GCINS1



GLASS  
HINS1



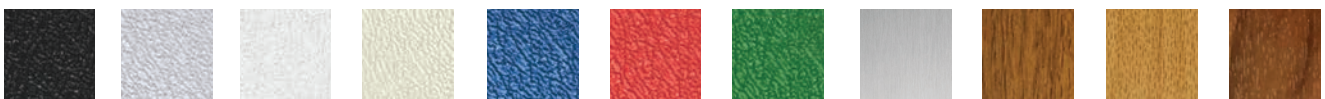
SOUP  
GSUPI4

Option	Dimensions (LxDxH mm)	List Price
GCINS1	325 x 530 x 24	£235
GHINS1	324 x 520 x 27	£235
GSUPI4	325 x 520 x 64	£235

## Colour Options

\*All units as standard come in Merlin Grey.

\*Use code below with either 2,3,4 or 5 on the end depending on the size of the unit chosen.

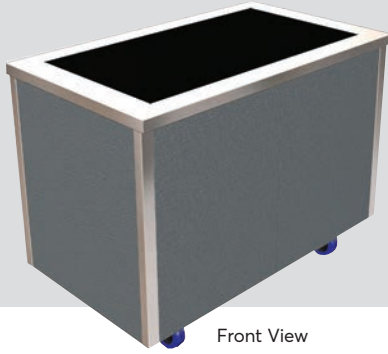


Black Light Grey White Buttermilk Blue Red Green Satin Steel Oak Beech Walnut

GBLAKCHA2-5 GGREYCHA2-5 GWHITCHA2-5 GREMCHA2-5 GBLUECHA2-5 GPREDCHA2-5 GGRENCHA2-5 GSSTLCHA2-5 GOAKCHA2-5 GBEECCHA2-5 GWALNCHA2-5

£0 £0 £0 £0 £0 £0 £0 £0 £151 £151 £151

# Ceran Top Hot Cupboard



Front View

The ceran top hot cupboard (no gantry) features a heated ceramic glass hotplate section formed in the worktop, that accommodates 1-1 size flat bottom GN containers or dishes with lids (not included). The hot cupboard underneath uses fan blown heated to evenly distribute heat around the cupboard. Behind lift-off rear sliding s/steel cupboard doors are two tiers or removable, height adjustable grid shelves for plate/container storage.

All models supplied with 3m lead & 13amp UK plug 13A | 230V | 50Hz



Rear View

BASE MODEL

Model	Weight (kg)	Dimensions (LxDxH mm)	GN Capacity (1/1)	Total Power (No Gantry)(kW)	Total Power (+ Hot Gantry)(kW)	List Price
GHP2	49	825 x 700 x 900	2	2.19	2.56	£2,293
GHP3	69	1175 x 700 x 900	3	2.37	2.97	£2,725
GHP4	92	1525 x 700 x 900	4	2.55	2.95	£3,180
GHP5	114	1875 x 700 x 900	5	2.73	2.83	£3,660

\*All option prices are to be added onto base unit prices for total unit price

## Gantry Options



Hot gantries s/steel, reversible curved glass sneeze screen, end glass, self help/ ass. serve use, + 397(h) above worktop, end glass, fitted with 200w quartz infra-red jacketed safety lamps.

HEATED GANTRY

Option	Weight (kg)	Dimensions (LxDxH mm)	GN Capacity (1/1)	Power (kW)	List Price
GHG2	7	825 x 700 x 397	2	0.4	£856
GHG3	9	1175 x 700 x 397	3	0.6	£980
GHG4	12	1525 x 700 x 397	4	0.8	£1,114
GHG5	16	1875 x 700 x 397	5	1.0	£1,256



Hot island gantry, s/steel, double curved glass sneeze screen, end glass, self help, + 397(h) above worktop, end glass, fitted with 200w quartz infra-red jacketed safety lamps.

HEATED ISLAND GANTRY

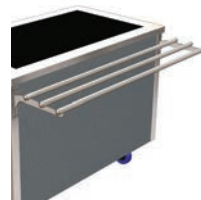
Option	Weight (kg)	Dimensions (LxDxH mm)	GN Capacity (1/1)	Power (kW)	List Price
GHIG2	9	825 x 700 x 397	2	0.4	£973
GHIG3	11	1175 x 700 x 397	3	0.6	£1,271
GHIG4	13	1525 x 700 x 397	4	0.8	£1,500
GHIG5	18	1875 x 700 x 397	5	1.0	£1,673

## Trayslide Options



SOLID DROP DOWN

Option	Dimensions (LxD mm)	List Price
GSTS2	825 x 302	£174
GSTS3	1175 x 302	£194
GSTS4	1525 x 302	£211
GSTS5	1875 x 302	£228



TUBULAR DROP DOWN

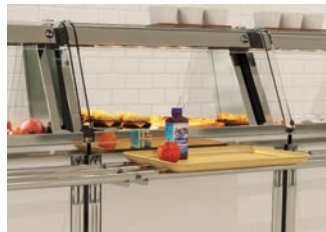
Option	Dimensions (LxD mm)	List Price
GTTS2	825 x 298	£221
GTTS3	1175 x 298	£283
GTTS4	1525 x 298	£321
GTTS5	1875 x 298	£375

## Height Options

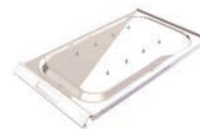
Base units as standard are 900mm high

JUNIOR HEIGHTS	Option	Dimensions (H mm)	List Price
	G850H	850	£0
	G800H	800	£0

\*Extended lead times



## Insert Options



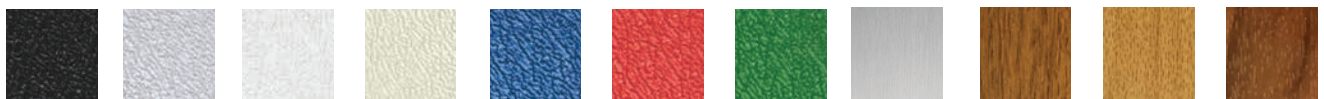
CARVING GCP1AL

Option	Dimensions (LxDxH mm)	List Price
GCP1AL	325 x 599 x 31	£235

## Colour Options

\*All units as standard come in Merlin Grey.

\*Use code below with either 2,3,4 or 5 on the end depending on the size of the unit chosen.



Black Light Grey White Buttermilk Blue Red Green Satin Steel Oak Beech Walnut

GBLAKCHA2-5 GGREYCHA2-5 GWHITCHA2-5 GREMCHA2-5 GBLUECHA2-5 GPREDCHA2-5 GGRENCHA2-5 GSSTLCHA2-5 GOAKCHA2-5 GBEECCHA2-5 GWALNCHA2-5

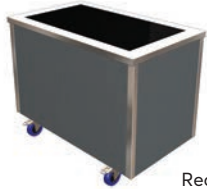
£0 £0 £0 £0 £0 £0 £0 £0 £151 £151 £151



# Ceran Top Hot Cupboard (Wall Sited)



Front View



Rear View

The wall sited ceran top hot cupboard fits neatly against walls, in alcoves, recesses, or back to back with island units. The ceran top hot cupboard (no gantry) features a heated ceramic glass hotplate section formed in the worktop, that accommodates 1-1 size flat bottom GN containers or dishes with lids (not included). The hot cupboard underneath uses fan blown heated to evenly distribute heat around the cupboard. Behind lift-off sliding s/steel cupboard doors are two tiers or removable, height adjustable grid shelves for plate/container storage.



DOWNLOAD ALL TECHNICAL DRAWINGS from [www.cedfabsltd.co.uk](http://www.cedfabsltd.co.uk)

All models supplied with 3m lead & 13amp UK plug 13A | 230V | 50Hz

Model	Weight (kg)	Dimensions (LxDxH mm)	GN Capacity (1/1)	Total Power (No Gantry)(kW)	Total Power (+ Hot Gantry)(kW)	List Price
GWSHP2	49	825 x 700 x 900	2	2.19	2.56	£2,293
GWSHP3	69	1175 x 700 x 900	3	2.37	2.97	£2,725
GWSHP4	92	1525 x 700 x 900	4	2.55	2.95	£3,180
GWSHP5	114	1875 x 700 x 900	5	2.73	2.83	£3,660

BASE MODEL

\*All option prices are to be added onto base unit prices for total unit price

## Gantry Options



Wall sited hot gantries, s/steel, curved glass, sneeze screen, end glass, self help use only, + 397(h) above worktop, fitted with 200W quartz infra-red jacketed safety lamps.

HEATED GANTRY

Option	Weight (kg)	Dimensions (LxDxH mm)	GN Capacity (1/1)	Power (kW)	List Price
GWSHG2	7	825 x 700 x 397	2	0.4	£856
GWSHG3	9	1175 x 700 x 397	3	0.6	£980
GWSHG4	12	1525 x 700 x 397	4	0.8	£1,114
GWSHG5	16	1875 x 700 x 397	5	1.0	£1,256



## Trayslide Options



SOLID DROP DOWN

Option	Dimensions (LxD mm)	List Price
GSTS2	825 x 302	£174
GSTS3	1175 x 302	£194
GSTS4	1525 x 302	£211
GSTS5	1875 x 302	£228



TUBULAR DROP DOWN

Option	Dimensions (LxD mm)	List Price
GTTS2	825 x 298	£221
GTTS3	1175 x 298	£283
GTTS4	1525 x 298	£321
GTTS5	1875 x 298	£375

## Height Options

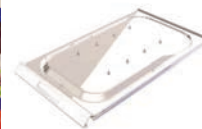
Base units as standard are 900mm high

JUNIOR HEIGHTS	Option	Dimensions (H mm)	List Price
	G850H	850	£0
	G800H	800	£0

\*Extended lead times



## Insert Options



CARVING GCP1AL

Option	Dimensions (LxDxH mm)	List Price
GCP1AL	325 x 599 x 31	£235

## Colour Options

\*All units as standard come in Merlin Grey.

\*Use code below with either 2,3,4 or 5 on the end depending on the size of the unit chosen.

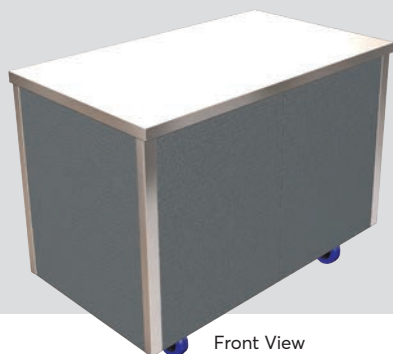


Black Light Grey White Buttermilk Blue Red Green Satin Steel Oak Beech Walnut

GBLAKCHA2-5 GGREYCHA2-5 GWHITCHA2-5 GCREMCHA2-5 GBLUECHA2-5 GPREDCHA2-5 GGRENCHA2-5 GSSTLCHA2-5 GOAKCHA2-5 GBEECCHA2-5 GWALNCHA2-5

£0 £0 £0 £0 £0 £0 £0 £0 £0 £151 £151 £151

# Hot Cupboard Plain Top



Front View

The plain top hot cupboard (no gantry) features a fan blown heating assembly which evenly distributes heat around the space. The model features a s/steel plain work surface and a rear store cupboard under. Behind lift-off rear sliding s/steel cupboard doors are two tiers or removable, height adjustable grid shelves for plate/container storage.

## Height Options

Base units as standard are 900mm high

JUNIOR HEIGHTS	Option	Dimensions (H mm)	List Price
	G850H	850	£0
G800H	800	£0	

\*Extended lead times

All models supplied with 3m lead & 13amp UK plug 13A | 230V | 50Hz



Rear View

BASE MODEL

Model	Weight (kg)	Dimensions (LxDxH mm)	GN Capacity (1/1)	Total Power (No Gantry)(kW)	Total Power (+Hot Gantry)(kW)	Total Power (+LED Gantry)(kW)	List Price
GHCP2	45	825 x 700 x 900	2	1.83	2.23	1.83	£2,026
GHCP3	67	1175 x 700 x 900	3	1.83	2.43	1.84	£2,278
GHCP4	90	1525 x 700 x 900	4	1.83	2.63	1.84	£2,559
GHCP5	112	1875 x 700 x 900	5	1.83	2.83	1.85	£2,826

\*All option prices are to be added onto base unit prices for total unit price

## Gantry Options



Ambient gantries, s/steel, c/w LED lighting, opaque cover, colour 4000k, reversible single curved glass sneeze screen, self help / ass. serve use, +397(h) above worktop and end glass.

AMBIENT GANTRY

Option	Weight (kg)	Dimensions (LxDxH mm)	GN Capacity (1/1)	Power (kW)	List Price
GAG2	7	825 x 700 x 397	2	0.008	£792
GAG3	9	1175 x 700 x 397	3	0.014	£824
GAG4	12	1525 x 700 x 397	4	0.016	£871
GAG5	16	1875 x 700 x 397	5	0.022	£925



Ambient self help island gantries, s/steel, double curved sneeze screen glass, end glass, c/w LED lighting, opaque cover, colour 4000k, self help use, +397(h) above worktop and end glass.

ISLAND AMBIENT GANTRY

Option	Weight (kg)	Dimensions (LxDxH mm)	GN Capacity (1/1)	Power (kW)	List Price
GAIG2	9	825 x 700 x 397	2	0.008	£973
GAIG3	11	1175 x 700 x 397	3	0.014	£1,271
GAIG4	13	1525 x 700 x 397	4	0.016	£1,500
GAIG5	18	1875 x 700 x 397	5	0.022	£1,673



Ambient assisted service deli gantries, s/steel, full height curved glass front, end glass, ambient glass mid shelf (not chilled), c/w LED lighting, opaque cover, colour 4000k, ass. service use, +540(h) above worktop.

DELI AMBIENT GANTRY

Option	Weight (kg)	Dimensions (LxDxH mm)	GN Capacity (1/1)	Power (kW)	List Price
GADG2	12	825 x 700 x 540	2	0.008	£1,208
GADG3	17	1175 x 700 x 540	3	0.014	£1,318
GADG4	21	1525 x 700 x 540	4	0.016	£1,437
GADG5	26	1875 x 700 x 540	5	0.022	£1,664



Hot gantries, s/steel, reversible single curved glass sneeze screen, self help / ass. serve use, +397(h) above worktop, reinforced worktop for heat, fitted with 200W quartz infra-red jacketed safety lamps.

HOT GANTRY

Option	Weight (kg)	Dimensions (LxDxH mm)	GN Capacity (1/1)	Power (kW)	List Price
GHG2PTHC	7	825 x 700 x 397	2	0.4	£856
GHG3PTHC	9	1175 x 700 x 397	3	0.6	£980
GHG4PTHC	12	1525 x 700 x 397	4	0.8	£1,114
GHG5PTHC	16	1875 x 700 x 397	5	1.0	£1,256

## Trayslide Options



SOLID DROP DOWN

Option	Dimensions (LxD mm)	List Price
GSTS2	825 x 302	£174
GSTS3	1175 x 302	£194
GSTS4	1525 x 302	£211
GSTS5	1875 x 302	£228



TUBULAR DROP DOWN

Option	Dimensions (LxD mm)	List Price
GTTS2	825 x 298	£221
GTTS3	1175 x 298	£283
GTTS4	1525 x 298	£321
GTTS5	1875 x 298	£375

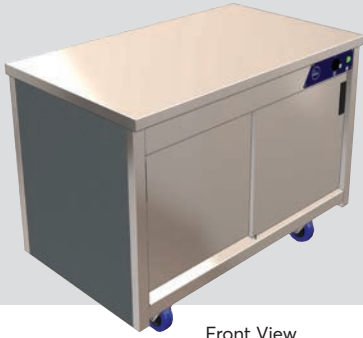
## Colour Options \*for colour previews & prices refer to next page

\*All units as standard come in Merlin Grey.

\*Use code below with either 2,3,4 or 5 on the end depending on the size of the unit chosen.

Black Light Grey White Buttermilk Blue Red Green Satin Steel Oak Beech Walnut  
 GBLAKCHA2-5 GGREYCHA2-5 GWHITCHA2-5 GCREMCHA2-5 GBLUECHA2-5 GPREDCHA2-5 GGRENCHA2-5 GSSTLCHA2-5 GOAKCHA2-5 GBEECCHA2-5 GWALNCHA2-5

# Hot Cupboard Plain Top (Wall Sited)

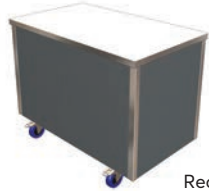


Front View

The wall sited plain top hot cupboard fits neatly against walls, in alcoves, recesses, or back to back with island units. The plain top hot cupboard (no gantry) features a fan blown heated assembly which evenly distributes heat around the space. The model features a s/steel plain work surface and a rear store cupboard under. Behind lift-off rear sliding s/steel cupboard doors are two tiers or removable, height adjustable grid shelves for plate/container storage.



DOWNLOAD ALL TECHNICAL DRAWINGS from [www.cedfabsltd.co.uk](http://www.cedfabsltd.co.uk)



Rear View

All models supplied with 3m lead & 13amp UK plug 13A | 230V | 50Hz

**BASE MODEL**

Model	Weight (kg)	Dimensions (LxDxH mm)	GN Capacity (1/1)	Total Power (No Gantry)(kW)	Total Power (+Hot Gantry)(kW)	Total Power (+LED Gantry)(kW)	List Price
GWSHCP2	45	825 x 700 x 900	2	1.83	2.23	1.83	£2,026
GWSHCP3	67	1175 x 700 x 900	3	1.83	2.43	1.84	£2,278
GWSHCP4	90	1525 x 700 x 900	4	1.83	2.63	1.84	£2,559
GWSHCP5	112	1875 x 700 x 900	5	1.83	2.83	1.85	£2,826

\*All option prices are to be added onto base unit prices for total unit price

## Gantry Options



Wall sited ambient gantries, s/steel, c/w LED lighting, opaque cover, colour 4000k, single curved glass sneeze screen, self help use, +397(h) above worktop and end glass.

**AMBIENT GANTRY**

Option	Weight (kg)	Dimensions (LxDxH mm)	GN Capacity (1/1)	Power (kW)	List Price
GWSAG2	7	825 x 700 x 397	2	0.008	£792
GWSAG3	9	1175 x 700 x 397	3	0.014	£824
GWSAG4	12	1525 x 700 x 397	4	0.016	£871
GWSAG5	16	1875 x 700 x 397	5	0.022	£925



Hot gantries, s/steel, single curved glass sneeze screen, self help use, +397(h) above worktop, reinforced worktop for heat, fitted with 200W quartz infra-red jacketed safety lamps.

**HOT GANTRY**

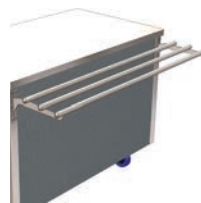
Option	Weight (kg)	Dimensions (LxDxH mm)	GN Capacity (1/1)	Power (kW)	List Price
GWSHG2PTHC	7	825 x 700 x 397	2	0.4	£856
GWSHG3PTHC	9	1175 x 700 x 397	3	0.6	£980
GWSHG4PTHC	12	1525 x 700 x 397	4	0.8	£1,114
GWSHG5PTHC	16	1875 x 700 x 397	5	1.0	£1,256

## Trayslide Options



**SOLID DROP DOWN**

Option	Dimensions (LxD mm)	List Price
GSTS2	825 x 302	£174
GSTS3	1175 x 302	£194
GSTS4	1525 x 302	£211
GSTS5	1875 x 302	£228



**TUBULAR DROP DOWN**

Option	Dimensions (LxD mm)	List Price
GTTS2	825 x 298	£221
GTTS3	1175 x 298	£283
GTTS4	1525 x 298	£321
GTTS5	1875 x 298	£375

## Height Options

Base units as standard are 900mm high

JUNIOR HEIGHTS	Option	Dimensions (H mm)	List Price
	G850H	850	£0
	G800H	800	£0

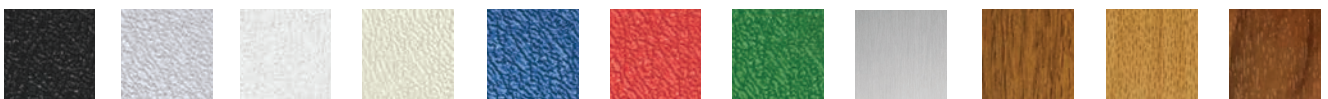
\*Extended lead times



## Colour Options

\*All units as standard come in Merlin Grey.

\*Use code below with either 2,3,4 or 5 on the end depending on the size of the unit chosen.

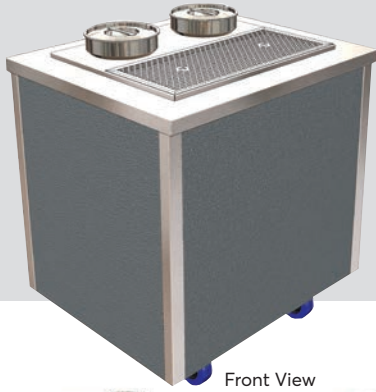


Black Light Grey White Buttermilk Blue Red Green Satin Steel Oak Beech Walnut

GBLAKCHA2-5 GGREYCHA2-5 GWHITCHA2-5 GREMCHA2-5 GBLUECHA2-5 GPREDCHA2-5 GGRENCHA2-5 GSSTLCHA2-5 GOAKCHA2-5 GBEECCHA2-5 GWALNCHA2-5

£0 £0 £0 £0 £0 £0 £0 £0 £151 £151 £151

# Soup Station (Reversible Top)



Front View

The soup station has a reversible bain marie insert within a s/steel worktop. Standard insert position is assisted service = 2x 4.5L soup pots to front, 1x drip tray to rear. Optional insert position is self help = 1x drip tray to front, 2x 4.5L soup pots to rear. (The insert lifts out for reversing to a self help position & allows simple repositioning of the heating element under. The ambient storage cupboard underneath has 2 tier adjustable grid shelves (both removable). The rear sliding s/steel cupboard doors are removable

## Height Options

Base units as standard are 900mm high

JUNIOR HEIGHTS	Option	Dimensions (H mm)	List Price
	G850H	850	£0
G800H	800	£0	

\*Extended lead times



Front View



Rear View

BASE MODEL

Model	Weight (kg)	Dimensions (LxDxH mm)	GN Capacity (1/1)	Total Power (kW)	List Price
GSUP2	45	825 x 700 x 900	2	0.75	£2,450

All models supplied with 3m lead & 13amp UK plug 13A | 230V | 50Hz

## Wall Sited Base Unit



Front View



Rear View

BASE MODEL

Model	Weight (kg)	Dimensions (LxDxH mm)	GN Capacity (1/1)	Total Power (kW)	List Price
GWSSUP2	45	825 x 700 x 900	2	0.75	£2,450

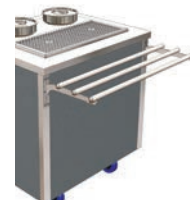
\*All option prices are to be added onto base unit prices for total unit price

## Trayslide Options



SOLID DROP DOWN

Option	Dimensions (LxD mm)	List Price
GSTS2	825 x 302	£174



TUBULAR DROP DOWN

Option	Dimensions (LxD mm)	List Price
GTTS2	825 x 298	£221



## Colour Options

\*All units as standard come in Merlin Grey.

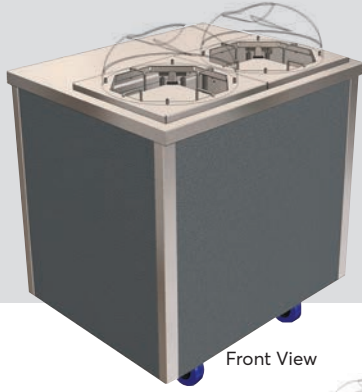
Black	Light Grey	White	Buttermilk	Blue	Red	Green	Satin Steel	Oak	Beech	Walnut
GBLAKCHA2	GGREYCHA2	GWHITCHA2	GCREMCHA2	GBLUECHA2	GPREDCHA2	GGRENCHA2	GSSTLCHA2	GOAKCHA2	GBEECCHA2	GWALNCHA2
£0	£0	£0	£0	£0	£0	£0	£0	£151	£151	£151

## Colour Options (Wall Sited)

\*All units as standard come in Merlin Grey.

Black	Light Grey	White	Buttermilk	Blue	Red	Green	Satin Steel	Oak	Beech	Walnut
GBLAKWSA2	GGREYWSA2	GWHITWSA2	GCREMWSA2	GBLUEWSA2	GPREDWSA2	GGRENWSA2	GSSTLWSA2	GOAKWSA2	GBEECWSA2	GWALNWSA2
£0	£0	£0	£0	£0	£0	£0	£0	£151	£151	£151

# Heated Twin Plate Dispenser



Front View

The twin heated plate dispenser has two spring loaded, self levelling plate storage sections within a s/steel worktop. Each spring loaded dispenser section is adjusted by lifting the four plate guide rods inwards/outwards, to enable the storage of various diameter plates, between 8"-12" (205mm-305mm) with a total capacity of 88-106 plates, depending on type. The spring keeps the plates below rising to the top of the dispenser, as top plates are removed. Springs can be easily removed to facilitate smaller and lighter weight plates. Each plate storage section is adjusted is supplied with a stackable polycarbonate lid, for use during the plate heating process. Also available as a wall sited version.



DOWNLOAD ALL TECHNICAL DRAWINGS from [www.cedfabsltd.co.uk](http://www.cedfabsltd.co.uk)

All models supplied with 3m lead & 13amp UK plug 13A | 230V | 50Hz



Front View

Rear View

BASE MODEL

Model	Weight (kg)	Dimensions (LxDxH mm)	GN Capacity (1/1)	Total Power (kW)	List Price
GHPD2	55	825 x 700 x 900	2	1.4	£3,054

## Wall Sited Base Unit



Front View

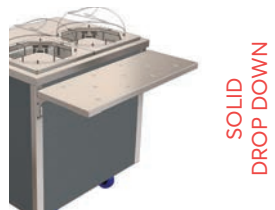
Rear View

BASE MODEL

Model	Weight (kg)	Dimensions (LxDxH mm)	GN Capacity (1/1)	Total Power (kW)	List Price
GWSHPD2	55	825 x 700 x 900	2	1.4	£3,054

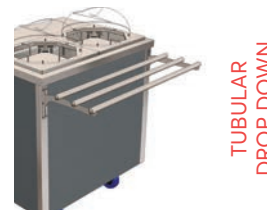
\*All option prices are to be added onto base unit prices for total unit price

## Trayslide Options



SOLID DROP DOWN

Option	Dimensions (LxD mm)	List Price
GSTS2	825 x 302	£174



TUBULAR DROP DOWN

Option	Dimensions (LxD mm)	List Price
GTTS2	825 x 298	£221

FOR HEIGHT OPTIONS REFER TO PREVIOUS PAGE



## Colour Options

\*All units as standard come in Merlin Grey.

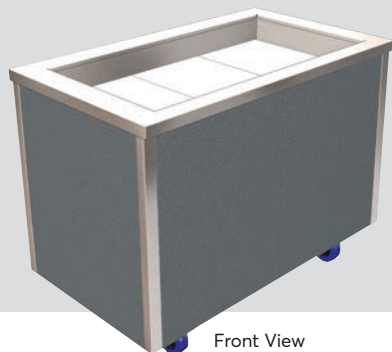


Black Light Grey White Buttermilk Blue Red Green Satin Steel Oak Beech Walnut

GBLAKCHA2 GGREYCHA2 GWHITCHA2 GCREMCHA2 GBLUECHA2 GPREDCHA2 GGRENCHA2 GSSTLCHA2 GOAKCHA2 GBEECCHA2 GWALNCHA2

£0 £0 £0 £0 £0 £0 £0 £0 £151 £151 £151

# Eutectic Plate Cold Well



Front View

The eutectic plate cold well features a series of removable, pre-frozen s/steel plates which sit within the base of the display area. The plates contain a cooling gel and provide a contact cooled surface for storage of fruit, bottled drinks or liquid desserts such as yoghurt pots etc. The display keeps pre-chilled product cold for a typical 2-3 hour lunch period.

## Height Options

Base units as standard are 900mm high

JUNIOR HEIGHTS	Option	Dimensions (H mm)	List Price
	G850H	850	£0
G800H	800	£0	

\*Extended lead times

Supplied with 3m lead & 13amp UK plug 13A | 230V | 50Hz if optional gantries are added.



Rear View

### BASE MODEL

Model	Weight (kg)	Dimensions (LxDxH mm)	GN Capacity (1/1)	Total Power (No Gantry)(kW)	Total Power (+ LED Gantry)(kW)	List Price
GEW2	60	825 x 700 x 900	2	N/A	0.008	£2,137
GEW3	89	1175 x 700 x 900	3	N/A	0.014	£2,685
GEW4	119	1525 x 700 x 900	4	N/A	0.018	£3,251
GEW5	147	1875 x 700 x 900	5	N/A	0.022	£3,753

\*All option prices are to be added onto base unit prices for total unit price

## Gantry Options



Ambient gantries, s/steel, c/w LED lighting, opaque cover, colour 4000k, reversible single curved glass sneeze screen, self help / ass. serve use, +397(h) above worktop and end glass.

### AMBIENT GANTRY

Option	Weight (kg)	Dimensions (LxDxH mm)	GN Capacity (1/1)	Power (kW)	List Price
GAG2	7	825 x 700 x 397	2	0.008	£792
GAG3	9	1175 x 700 x 397	3	0.014	£824
GAG4	12	1525 x 700 x 397	4	0.016	£871
GAG5	16	1875 x 700 x 397	5	0.022	£925



Ambient self help island gantries, s/steel, double curved sneeze screen glass, end glass, c/w LED lighting, opaque cover, colour 4000k, self help use, +397(h) above worktop and end glass.

### ISLAND AMBIENT GANTRY

Option	Weight (kg)	Dimensions (LxDxH mm)	GN Capacity (1/1)	Power (kW)	List Price
GAIG2	9	825 x 700 x 397	2	0.008	£973
GAIG3	11	1175 x 700 x 397	3	0.014	£1,271
GAIG4	13	1525 x 700 x 397	4	0.016	£1,500
GAIG5	18	1875 x 700 x 397	5	0.022	£1,673



Ambient assisted service deli gantry, s/steel, full height curved glass front, end glass, ambient glass mid shelf (not chilled), c/w LED lighting, opaque cover, colour 4000k, ass. service use, +540(h) above worktop.

### DELI AMBIENT GANTRY

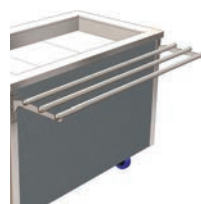
Option	Weight (kg)	Dimensions (LxDxH mm)	GN Capacity (1/1)	Power (kW)	List Price
GADG2	12	825 x 700 x 540	2	0.008	£1,208
GADG3	17	1175 x 700 x 540	3	0.014	£1,318
GADG4	21	1525 x 700 x 540	4	0.016	£1,437
GADG5	26	1875 x 700 x 540	5	0.022	£1,664

## Trayslide Options



### SOLID DROP DOWN

Option	Dimensions (LxD mm)	List Price
GSTS2	825 x 302	£174
GSTS3	1175 x 302	£194
GSTS4	1525 x 302	£211
GSTS5	1875 x 302	£228



### TUBULAR DROP DOWN

Option	Dimensions (LxD mm)	List Price
GTTS2	825 x 298	£221
GTTS3	1175 x 298	£283
GTTS4	1525 x 298	£321
GTTS5	1875 x 298	£375

## Insert Options

Cannot be used with GAIG2-GAIG5 options.

For use with eutectic well only.

For use with GEPS2-GEPS5 only.



PREP SHELF  
(+ 1 CUTTING BOARD)

Option	Dimensions (LxDxH above worktop mm)	List Price
GEPS2	720 x 180 x 15	£345
GEPS3	1070 x 180 x 15	£362
GEPS4	1420 x 180 x 15	£375
GEPS5	1770 x 180 x 15	£392



ADDITIONAL COOLING PLATE

Option	Dimensions (LxDxH mm)	List Price
GEP1	530 x 325 x 45	£194

### CUTTING BOARD

Option	Dimensions (LxDxH mm)	List Price
KCB1	350 x 250 x 30	£180

## Colour Options \*refer to next page for prices & colour previews

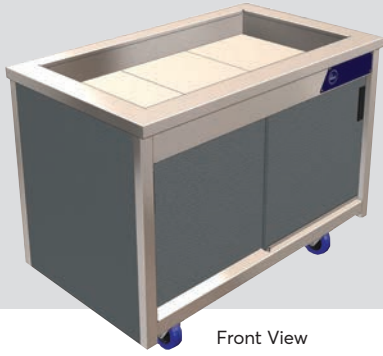
\*All units as standard come in Merlin Grey.

\*Use code below with either 2,3,4 or 5 on the end depending on the size of the unit chosen.

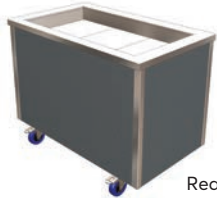
Black Light Grey White Buttermilk Blue Red Green Satin Steel Oak Beech Walnut

GBLAKCHA2-5 GGREYCHA2-5 GWHITCHA2-5 GCREMCHA2-5 GBLUECHA2-5 GPREDCHA2-5 GGRENCHA2-5 GSSTLCHA2-5 GOAKCHA2-5 GBEECCHA2-5 GWALNCHA2-5

# Eutectic Plate Cold Well (Wall Sited)



Front View



Rear View

BASE MODEL

The wall sited eutectic plate cold well fits neatly against walls, in alcoves, recesses, or back to back with island units. The eutectic plate cold well features a series of removable, pre-frozen s/steel plates which sit within the base of the display area. The plates contain a cooling gel and provide a contact cooled surface for storage of fruit, bottled drinks or liquid desserts such as yoghurt pots etc. The display keeps pre-chilled product cold for a typical 2-3 hour lunch period.

All models supplied with 3m lead & 13amp UK plug 13A | 230V | 50Hz



DOWNLOAD ALL TECHNICAL DRAWINGS from [www.cedfabsltd.co.uk](http://www.cedfabsltd.co.uk)

Model	Weight (kg)	Dimensions (LxDxH mm)	GN Capacity (1/1)	Total Power (No Gantry)(kW)	Total Power (+ LED Gantry)(kW)	List Price
GWSEW2	49	825 x 700 x 900	2	N/A	0.008	£2,137
GWSEW3	69	1175 x 700 x 900	3	N/A	0.014	£2,685
GWSEW4	92	1525 x 700 x 900	4	N/A	0.018	£3,251
GWSEW5	114	1875 x 700 x 900	5	N/A	0.022	£3,753

\*All option prices are to be added onto base unit prices for total unit price

## Gantry Options



Wall sited ambient gantries, s/steel, c/w LED lighting, opaque cover, colour 4000k, reversible single curved glass sneeze screen, self help +397(h) above worktop and end glass.

AMBIENT GANTRY

Option	Weight (kg)	Dimensions (LxDxH mm)	GN Capacity (1/1)	Power (kW)	List Price
GWSAG2	7	825 x 700 x 397	2	0.008	£792
GWSAG3	9	1175 x 700 x 397	3	0.014	£824
GWSAG4	12	1525 x 700 x 397	4	0.016	£871
GWSAG5	16	1875 x 700 x 397	5	0.022	£925



## Trayslide Options



SOLID DROP DOWN

Option	Dimensions (LxD mm)	List Price
GSTS2	825 x 302	£174
GSTS3	1175 x 302	£194
GSTS4	1525 x 302	£211
GSTS5	1875 x 302	£228



TUBULAR DROP DOWN

Option	Dimensions (LxD mm)	List Price
GTTS2	825 x 298	£221
GTTS3	1175 x 298	£283
GTTS4	1525 x 298	£321
GTTS5	1875 x 298	£375

## Height Options

Base units as standard are 900mm high

JUNIOR HEIGHTS	Option	Dimensions (H mm)	List Price
	G850H	850	£0
	G800H	800	£0

\*Extended lead times



## Insert Options

For use with eutectic well only.

ADDITIONAL COOLING PLATE	Option	Dimensions (LxDxH mm)	List Price
	GEP1	530 x 325 x 45	£194

## Colour Options

\*All units as standard come in Merlin Grey. \*Use code below with either 2,3,4 or 5 on the end depending on the size of the unit chosen.

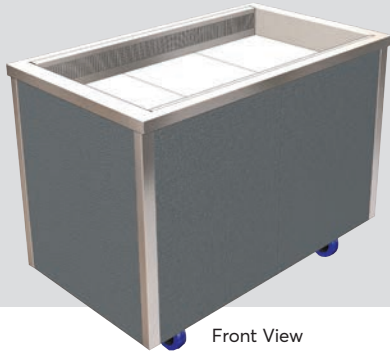


Black Light Grey White Buttermilk Blue Red Green Satin Steel Oak Beech Walnut

GBLAKWSA2-5 GGREYWSA2-5 GWHITWSA2-5 GCREMWSA2-5 GBLUEWSA2-5 GPREDWSA2-5 GGRENWSA2-5 GSSTLWSA2-5 GOAKWSA2-5 GBEECWSA2-5 GWALNWSA2-5

£0 £0 £0 £0 £0 £0 £0 £0 £0 £151 £151 £151

# Refrigerated Cold Well



Front View

The cold well circulates a constant stream of cold air within the display area, maintaining pre-chilled food between 2-5°C, just right for your fruit, vegetables, salads & cold drinks. Digital temperature control, auto defrost & auto condensate evaporation tray allow 24 hour operation if required. All the glide range cold displays use a highly efficient, naturally occurring hydrocarbon refrigerant gas which is hermetically sealed within condensing units, which reduce energy consumption and your carbon footprint.

All models supplied with 3m lead & 13amp UK plug 13A | 230V | 50Hz



Rear View

## BASE MODEL

Model	Weight (kg)	Dimensions (LxDxH mm)	GN Capacity (1/1)	Total Power (No Gantry)(kW)	Total Power (+ LED Gantry)(kW)	List Price
GCW2HT	95	825 x 700 x 900	2	1.22	1.23	£5,684
GCW3HT	125	1175 x 700 x 900	3	1.22	1.23	£6,047
GCW4HT	155	1525 x 700 x 900	4	1.44	1.46	£6,693
GCW5HT	185	1875 x 700 x 900	5	1.65	1.68	£7,981

\*All option prices are to be added onto base unit prices for total unit price

## Wall Sited Option



Front View

## WALL SITED (BASE PANEL)

Option	Weight (kg)	Dimensions (LxDxH mm)	GN Capacity (1/1)	List Price
GCWWS2	1	740 x 15 x 600	2	£94
GCWWS3	1.3	1090 x 15 x 600	3	£100
GCWWS4	1.6	1440 x 15 x 600	4	£105
GCWWS5	1.8	1790 x 15 x 600	5	£121

## Gantry Options



Ambient gantries, s/steel, c/w LED lighting, opaque cover, colour 4000k, reversible single curved glass sneeze screen, self help / ass. serve use, +397(h) above worktop and end glass.

## AMBIENT GANTRY

Option	Weight (kg)	Dimensions (LxDxH mm)	GN Capacity (1/1)	Power (kW)	List Price
GAG2	7	825 x 700 x 397	2	0.008	£792
GAG3	9	1175 x 700 x 397	3	0.014	£824
GAG4	12	1525 x 700 x 397	4	0.016	£871
GAG5	16	1875 x 700 x 397	5	0.022	£925



Ambient self help island gantries, s/steel, double curved sneeze screen glass, end glass, c/w LED lighting, opaque cover, colour 4000k, self help use, +397(h) above worktop and end glass.

## ISLAND AMBIENT GANTRY

Option	Weight (kg)	Dimensions (LxDxH mm)	GN Capacity (1/1)	Power (kW)	List Price
GAIG2	9	825 x 700 x 397	2	0.008	£973
GAIG3	11	1175 x 700 x 397	3	0.014	£1,271
GAIG4	13	1525 x 700 x 397	4	0.016	£1,500
GAIG5	18	1875 x 700 x 397	5	0.022	£1,673



Ambient assisted service deli gantry, s/steel, full height curved glass front, end glass, ambient glass mid shelf (not chilled), c/w LED lighting, opaque cover, colour 4000k, ass. service use, +540(h) above worktop.

## DELI AMBIENT GANTRY

Option	Weight (kg)	Dimensions (LxDxH mm)	GN Capacity (1/1)	Power (kW)	List Price
GADG2	12	825 x 700 x 540	2	0.008	£1,208
GADG3	17	1175 x 700 x 540	3	0.014	£1,318
GADG4	21	1525 x 700 x 540	4	0.016	£1,437
GADG5	26	1875 x 700 x 540	5	0.022	£1,664

Only available with Wall Sited option.



Ambient wall sited gantry, s/steel, single curved glass sneeze screen, end glass, c/w LED lighting, opaque cover, colour 4000k, self help use only, +397(h) above worktop.

## WALL SITED AMBIENT GANTRY

Option	Weight (kg)	Dimensions (LxDxH mm)	GN Capacity (1/1)	Power (kW)	List Price
GWSAG2	7	825 x 700 x 397	2	0.008	£792
GWSAG3	9	1175 x 700 x 397	3	0.014	£824
GWSAG4	12	1525 x 700 x 397	4	0.016	£871
GWSAG5	16	1875 x 700 x 397	5	0.022	£925

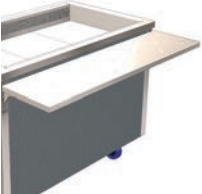
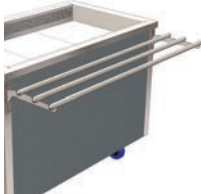
Product continues onto next page.





DOWNLOAD ALL TECHNICAL DRAWINGS from [www.cedfabsltd.co.uk](http://www.cedfabsltd.co.uk)

### Trayslide Options

Option	Dimensions (LxD mm)	List Price	Option	Dimensions (LxD mm)	List Price		
						Option	Dimensions (LxD mm)
 <b>SOLID DROP DOWN</b>	GSTS2	825 x 302	£174	 <b>TUBULAR DROP DOWN</b>	GTTT2	825 x 298	£221
	GSTS3	1175 x 302	£194		GTTT3	1175 x 298	£283
	GSTS4	1525 x 302	£211		GTTT4	1525 x 298	£321
	GSTS5	1875 x 302	£228		GTTT5	1875 x 298	£375

### Insert Options

Cannot be used with GAIG2 -GAIG5 options.

Option	Dimensions (LxDx +H above worktop mm)	List Price	Option	Dimensions (LxDxH mm)	List Price		
 <b>PREP SHELF (+1 CUTTING BOARD)</b>	GPS2	720 x 180 x 10	£345	 <b>COLD WELL PAN</b>	GPSC	350 x 500 x 100	£125
	GPS3	1070 x 180 x 10	£362				
	GPS4	1420 x 180 x 10	£375				
	GPS5	1770 x 180 x 10	£392				

### Height Options

Base units as standard are 900mm high.

JUNIOR HEIGHTS	Option	Dimensions (H mm)	List Price
	G850H	850	£0
	G800H	800	£0

\*Extended lead times



### Insert Options continued

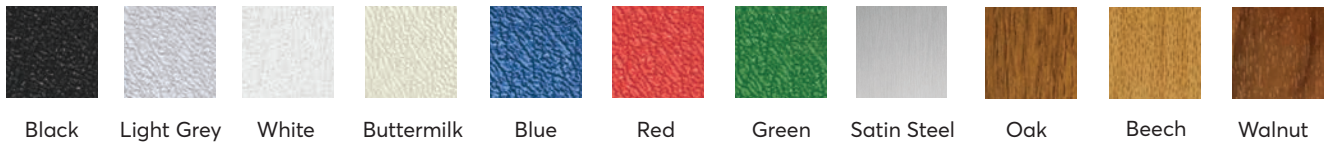
For use with GEPS2-GEPS5 only.

Option	Dimensions (LxDxH mm)	List Price
KCB1	350 x 250 x 30	£180

### Colour Options

\*All units as standard come in Merlin Grey.

\*Use code below with either 2,3,4 or 5 on the end depending on the size of the unit chosen.



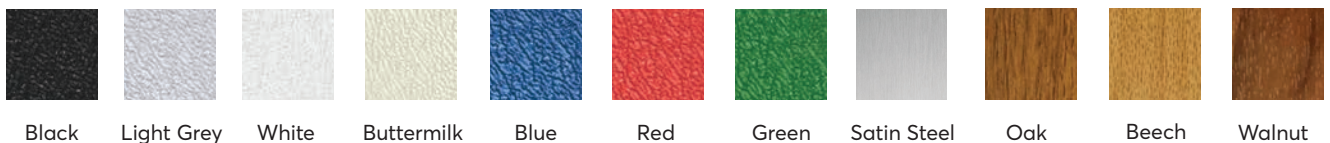
GBLAKCHA2-5 GGREYCHA2-5 GWHITCHA2-5 GCREMCHA2-5 GBLUECHA2-5 GPREDCHA2-5 GGRENCHA2-5 GSSTLCHA2-5 GOAKCHA2-5 GBEECCHA2-5 GWALNCHA2-5

£0    £0    £0    £0    £0    £0    £0    £0    £151    £151    £151

### Colour Options (Wall Sited)

\*All units as standard come in Merlin Grey.

\*Use code below with either 2,3,4 or 5 on the end depending on the size of the unit chosen.



GBLAKWSC2-5 GGREYWSC2-5 GWHITWSC2-5 GCREMWSC2-5 GBLUEWSC2-5 GPREDWSC2-5 GGRENWSC2-5 GSSTLWSC2-5 GOAKWSC2-5 GBEECWSC2-5 GWALNWSC2-5

£0    £0    £0    £0    £0    £0    £0    £0    £151    £151    £151

# Refrigerated Cold Multideck



Self Help Rear Doors model shown

The cold multideck circulates a constant stream of cold air within the display area, maintaining pre-chilled foods between 2-5°C, just right for your fruit, vegetables, sandwiches, yoghurts, salads & cold drinks. Digital temperature control, auto defrost & auto condensate evaporation tray allow 24 hour operation if required. All the glide range cold displays use a highly efficient, naturally occurring hydrocarbon refrigerant gas which is hermetically sealed within condensing units, which reduce energy consumption and your carbon footprint.

## Height Options

Base units as standard are 900mm high

JUNIOR HEIGHTS	Model	Dimensions (H mm)	List Price
	G850H	850	£0
G800H	800	£0	

\*Extended lead times

All models supplied with 3m lead & 13amp UK plug 13A | 230V | 50Hz



Front View

Rear View

SELF HELP REAR DOORS

Model	Weight (kg)	Dimensions (LxDxH mm)	Overall Height (mm)	GN Capacity (1/1)	Total Power (kW)	List Price
GMDR2HT	120	825 x 700 x 900	1655	2	1.51	£9,000
GMDR3HT	160	1175 x 700 x 900	1655	3	1.73	£9,754
GMDR4HT	200	1525 x 700 x 900	1655	4	1.73	£10,776
GMDR5HT	240	1875 x 700 x 900	1655	5	2.20	£11,528



Front View

Rear View

SELF HELP FIXED BACK

Model	Weight (kg)	Dimensions (LxDxH mm)	Overall Height (mm)	GN Capacity (1/1)	Total Power (kW)	List Price
GMDF2HT	110	825 x 700 x 900	1655	2	1.51	£8,743
GMDF3HT	150	1175 x 700 x 900	1655	3	1.73	£9,754
GMDF4HT	190	1525 x 700 x 900	1655	4	1.73	£10,776
GMDF5HT	230	1875 x 700 x 900	1655	5	2.20	£11,528



Front View

Rear View

ASSISTED SERVICE REAR DOORS

Model	Weight (kg)	Dimensions (LxDxH mm)	Overall Height (mm)	GN Capacity (1/1)	Total Power (kW)	List Price
GMDR2ASHT	122	825 x 700 x 900	1655	2	1.51	£9,219
GMDR3ASHT	163	1175 x 700 x 900	1655	3	1.75	£10,045
GMDR4ASHT	203	1525 x 700 x 900	1655	4	1.82	£11,136
GMDR5ASHT	244	1875 x 700 x 900	1655	5	2.20	£11,953

\*All option prices are to be added onto base unit prices for total unit price

## Trayslide & Night Blind Options



SOLID DROP DOWN

Option	Dimensions (LxD mm)	List Price
GSTS2	825 x 302	£174
GSTS3	1175 x 302	£194
GSTS4	1525 x 302	£211
GSTS5	1875 x 302	£228



TUBULAR DROP DOWN

Option	Dimensions (LxD mm)	List Price
GTTS2	825 x 298	£221
GTTS3	1175 x 298	£283
GTTS4	1525 x 298	£321
GTTS5	1875 x 298	£375



NIGHT BLIND SELF HELP

Option	Dimensions (LxH mm)	List Price
GNB2	770 x 662	£386
GNB3	1120 x 662	£422
GNB4	1470 x 662	£526
GNB5	1820 x 662	£549



## Colour Options (Rear Door) \*for fixed back, refer to next page codes

\*All units as standard come in Merlin Grey.

\*Use code below with either 2,3,4 or 5 on the end depending on the size of the unit chosen.

Black	Light Grey	White	Buttermilk	Blue	Red	Green	Satin Steel	Oak	Beech	Walnut
GBLAKCHA2-5	GGREYCHA2-5	GWHITCHA2-5	GCREMCHA2-5	GBLUECHA2-5	GPREDCHA2-5	GGRENCHA2-5	GSSTLCHA2-5	GOAKCHA2-5	GBEECCHA2-5	GWALNCHA2-5
£0	£0	£0	£0	£0	£0	£0	£0	£151	£151	£151

# Refrigerated Cold Multideck (Security Shutter)



Self Help Rear Doors model shown

The cold multideck circulates a constant stream of cold air within the display area, maintaining pre-chilled foods between 2-5°C, just right for your fruit, vegetables, sandwiches, yoghurts, salads & cold drinks. Digital temperature control, auto defrost & auto condensate evaporation tray allow 24 hour operation if required. All the glide range cold displays use a highly efficient, naturally occurring hydrocarbon refrigerant gas which is hermetically sealed within condensing units, which reduce energy consumption and your carbon footprint.

This self help multideck features a central locking, heavy duty security shutter.



DOWNLOAD ALL TECHNICAL DRAWINGS from [www.cedfabsltd.co.uk](http://www.cedfabsltd.co.uk)

All models supplied with 3m lead & 13amp UK plug 13A | 230V | 50Hz



Front View

Rear View

SELF HELP REAR DOORS

Model	Weight (kg)	Dimensions (LxDxH mm)	Overall Height (mm)	GN Capacity (1/1)	Total Power (kW)	List Price
GMDR2RSHT	130	825 x 700 x 900	1840	2	1.51	£10,350
GMDR3RSHT	171	1175 x 700 x 900	1840	3	1.73	£11,371
GMDR4RSHT	213	1525 x 700 x 900	1840	4	1.73	£12,548
GMDR5RSHT	253	1875 x 700 x 900	1840	5	2.20	£13,571



Front View

Rear View

SELF HELP FIXED BACK

Model	Weight (kg)	Dimensions (LxDxH mm)	Overall Height (mm)	GN Capacity (1/1)	Total Power (kW)	List Price
GMDF2RSHT	120	825 x 700 x 900	1840	2	1.51	£10,055
GMDF3RSHT	159	1175 x 700 x 900	1840	3	1.73	£11,371
GMDF4RSHT	199	1525 x 700 x 900	1840	4	1.73	£12,548
GMDF5RSHT	235	1875 x 700 x 900	1840	5	2.20	£13,571

\*All option prices are to be added onto base unit prices for total unit price



## Height Options

Base units as standard are 900mm high

JUNIOR HEIGHTS	Option	Dimensions (H mm)	List Price
	G850H	850	£0
	G800H	800	£0

\*Extended lead times

## Trayslide & Night Blind Options



SOLID DROP DOWN

Option	Dimensions (LxD mm)	List Price
GSTS2	825 x 302	£174
GSTS3	1175 x 302	£194
GSTS4	1525 x 302	£211
GSTS5	1875 x 302	£228



TUBULAR DROP DOWN

Option	Dimensions (LxD mm)	List Price
GTTS2	825 x 298	£221
GTTS3	1175 x 298	£283
GTTS4	1525 x 298	£321
GTTS5	1875 x 298	£375

## Colour Options (Fixed Back) \*for rear doors, refer to previous page codes

\*All units as standard come in Merlin Grey.

\*Use code below with either 2,3,4 or 5 on the end depending on the size of the unit chosen.



Black Light Grey White Buttermilk Blue Red Green Satin Steel Oak Walnut Beech

GBLAKWSC2-5 GGREYWSC2-5 GWHITWSC2-5 GCREMWSC2-5 GBLUEWSC2-5 GPREDWSC2-5 GGRENWSC2-5 GSSTLWSC2-5 GOAKWSC2-5 GBEECWSC2-5 GWALNWSC2-5

£0 £0 £0 £0 £0 £0 £0 £0 £151 £151 £151

# Ambient Multideck



Self Help Rear Doors model shown

The ambient multideck is ideal for displaying confectionery, fruit, baked goods or drinks. The display features 3 tiers of sturdy 10mm thick glass shelving - each shelf fitted with point of sale ticket strips. Illumination is provided by LED lighting. Storage cupboard with sliding doors below. The multideck is available as self help or assisted service with rear doors for loading. The model can also be produced as a fixed back version for wall sited use.

## Height Options

Base units as standard are 900mm high

JUNIOR HEIGHTS	Option	Dimensions (H mm)	List Price
	G850H	850	£0
G800H	800	£0	

\*Extended lead times

All models supplied with 3m lead & 13amp UK plug 13A | 230V | 50Hz



Front View

Rear View

SELF HELP REAR DOORS

Model	Weight (kg)	Dimensions (LxDxH mm)	Overall Height (mm)	GN Capacity (1/1)	Total Power (kW)	List Price
GMDA2	90	825 x 700 x 900	1655	2	0.1	£4,162
GMDA3	120	1175 x 700 x 900	1655	3	0.1	£4,735
GMDA4	168	1525 x 700 x 900	1655	4	0.1	£5,369
GMDA5	202	1875 x 700 x 900	1655	5	0.2	£5,924



Front View

Rear View

SELF HELP FIXED BACK

Model	Weight (kg)	Dimensions (LxDxH mm)	Overall Height (mm)	GN Capacity (1/1)	Total Power (kW)	List Price
GMDA2FB	80	825 x 700 x 900	1655	2	0.1	£4,162
GMDA3FB	110	1175 x 700 x 900	1655	3	0.1	£4,729
GMDA4FB	158	1525 x 700 x 900	1655	4	0.1	£5,369
GMDA5FB	192	1875 x 700 x 900	1655	5	0.2	£5,924



Front View

Rear View

ASSISTED SERVICE REAR DOORS

Model	Weight (kg)	Dimensions (LxDxH mm)	Overall Height (mm)	GN Capacity (1/1)	Total Power (kW)	List Price
GMDA2AS	100	825 x 700 x 900	1655	2	0.1	£4,382
GMDA3AS	133	1175 x 700 x 900	1655	3	0.1	£5,018
GMDA4AS	179	1525 x 700 x 900	1655	4	0.1	£5,494
GMDA5AS	215	1875 x 700 x 900	1655	5	0.2	£6,114

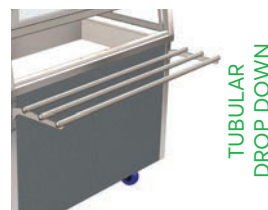
\*All option prices are to be added onto base unit prices for total unit price

## Trayslide & Night Blind Options



SOLID DROP DOWN

Option	Dimensions (LxD mm)	List Price
GSTS2	825 x 302	£174
GSTS3	1175 x 302	£194
GSTS4	1525 x 302	£211
GSTS5	1875 x 302	£228



TUBULAR DROP DOWN

Option	Dimensions (LxD mm)	List Price
GTTS2	825 x 298	£221
GTTS3	1175 x 298	£283
GTTS4	1525 x 298	£321
GTTS5	1875 x 298	£375



NIGHT BLIND SELF HELP

Option	Dimensions (LxH mm)	List Price
GNB2	770 x 662	£386
GNB3	1120 x 662	£422
GNB4	1470 x 662	£526
GNB5	1820 x 662	£549



## Colour Options (Rear Door) \*for fixed back, refer to next page codes

\*All units as standard come in Merlin Grey.

\*Use code below with either 2,3,4 or 5 on the end depending on the size of the unit chosen.

Black	Light Grey	White	Buttermilk	Blue	Red	Green	Satin Steel	Oak	Beech	Walnut
GBLAKCHA2-5	GGREYCHA2-5	GWHITCHA2-5	GCREMCHA2-5	GBLUECHA2-5	GPREDCHA2-5	GGRENCHA2-5	GSSTLCHA2-5	GOAKCHA2-5	GBEECCHA2-5	GWALNCHA2-5
£0	£0	£0	£0	£0	£0	£0	£0	£151	£151	£151

# Ambient Multideck (Security Shutter)



Self Help Rear Doors model shown

The ambient multideck is ideal for displaying confectionery, fruit, baked goods or drinks. The display features 3 tiers of sturdy 10mm thick glass shelving - each shelf fitted with point of sale ticket strips. Illumination is provided by LED lighting. Storage cupboard with sliding doors below. The multideck is available as self help or assisted service with rear doors for loading. The model can also be produced as a fixed back version for wall sited use.

This self help multideck features a central locking, heavy duty security shutter.



DOWNLOAD ALL TECHNICAL DRAWINGS from [www.cedfabsltd.co.uk](http://www.cedfabsltd.co.uk)

All models supplied with 3m lead & 13amp UK plug 13A | 230V | 50Hz



Front View

Rear View

SELF HELP REAR DOORS

Model	Weight (kg)	Dimensions (LxDxH mm)	Overall Height (mm)	GN Capacity (1/1)	Total Power (kW)	List Price
GMDA2RS	95	825 x 700 x 900	1840	2	0.1	£5,352
GMDA3RS	129	1175 x 700 x 900	1840	3	0.1	£6,166
GMDA4RS	179	1525 x 700 x 900	1840	4	0.1	£7,093
GMDA5RS	215	1875 x 700 x 900	1840	5	0.2	£7,909



Front View

Rear View

SELF HELP FIXED BACK

Model	Weight (kg)	Dimensions (LxDxH mm)	Overall Height (mm)	GN Capacity (1/1)	Total Power (kW)	List Price
GMDA2FBRS	85	825 x 700 x 900	1840	2	0.1	£5,354
GMDA3FBRS	119	1175 x 700 x 900	1840	3	0.1	£6,163
GMDA4FBRS	166	1525 x 700 x 900	1840	4	0.1	£7,093
GMDA5FBRS	200	1875 x 700 x 900	1840	5	0.2	£7,909

\*All option prices are to be added onto base unit prices for total unit price



## Height Options

Base units as standard are 900mm high

JUNIOR HEIGHTS	Option	Dimensions (H mm)	List Price
	G850H	850	£0
	G800H	800	£0

## Trayslide Options



SOLID DROP DOWN

Option	Dimensions (LxD mm)	List Price
GSTS2	825 x 302	£174
GSTS3	1175 x 302	£194
GSTS4	1525 x 302	£211
GSTS5	1875 x 302	£228



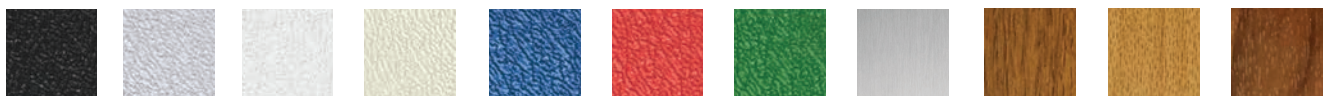
TUBULAR DROP DOWN

Option	Dimensions (LxD mm)	List Price
GTTS2	825 x 298	£221
GTTS3	1175 x 298	£283
GTTS4	1525 x 298	£321
GTTS5	1875 x 298	£375

## Colour Options (Fixed Back) \*for rear doors, refer to previous page codes

\*All units as standard come in Merlin Grey.

\*Use code below with either 2,3,4 or 5 on the end depending on the size of the unit chosen.

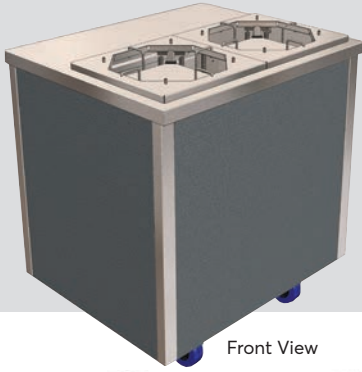


Black Light Grey White Buttermilk Blue Red Green Satin Steel Oak Beech Walnut

GBLAKWSC2-5 GGREYWSC2-5 GWHITWSC2-5 GCREMWSC2-5 GBLUEWSC2-5 GPREDWSC2-5 GGRENWSC2-5 GSSTLWSC2-5 GOAKWSC2-5 GBEECWSC2-5 GWALNWSC2-5

£0 £0 £0 £0 £0 £0 £0 £0 £151 £151 £151

# Ambient Twin Plate Dispenser



Front View

The Glide twin ambient plate dispenser has two spring loaded, self levelling plate storage sections within a s/steel worktop. Each spring loaded dispenser section is adjusted by lifting the four plate guides rods outwards/inwards, to enable the storage of various diameter plates, between 8"-12"(205mm-305mm) with a total capacity of 88-106 plates, depending on type. The springs keep the plates below rising to the top of the dispenser, as top plates are removed.

## Height Options

Base units as standard are 900mm high

JUNIOR HEIGHTS	Model	Dimensions (H mm)	List Price
	G850H	850	£0
G800H	800	£0	

\*Extended lead times



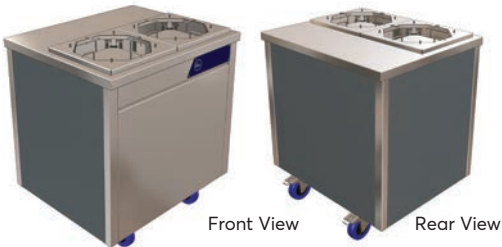
Front View

Rear View

BASE MODEL

Model	Weight (kg)	Dimensions (LxDxH mm)	GN Capacity (1/1)	Total Power (kW)	List Price
GAPD2	54	825 x 700 x 900	2	N/A	£2,450

## Wall Sited Base Unit



Front View

Rear View

BASE MODEL

Model	Weight (kg)	Dimensions (LxDxH mm)	GN Capacity (1/1)	Total Power (kW)	List Price
GWSAPD2	54	825 x 700 x 900	2	N/A	£2,450

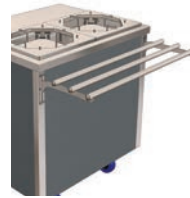
\*All option prices are to be added onto base unit prices for total unit price

## Trayslide Options



SOLID DROP DOWN

Option	Dimensions (LxD mm)	List Price
GSTS2	825 x 302	£174



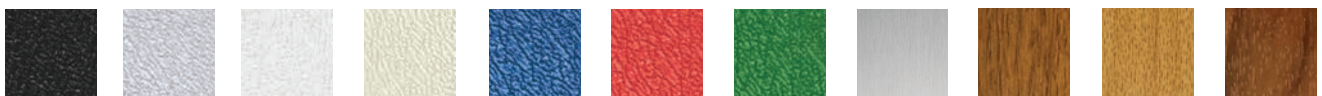
TUBULAR DROP DOWN

Option	Dimensions (LxD mm)	List Price
GTTS2	825 x 298	£221



## Colour Options

\*All units as standard come in Merlin Grey.

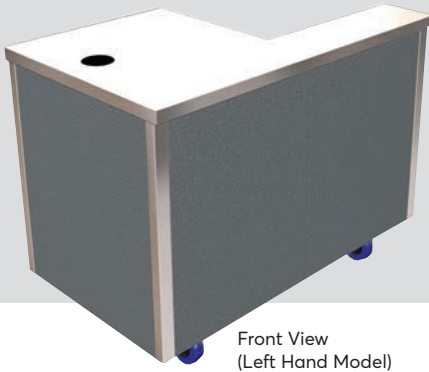


Black Grey White Buttermilk Blue Red Green Satin Steel Oak Beech Walnut

GBLAKCHA2 GGREYCHA2 GWHITCHA2 GCREMCHA2 GBLUECHA2 GPREDCHA2 GGRENCHA2 GSSTLCHA2 GOAKCHA2 GBEECCHA2 GWALNCHA2

£0 £0 £0 £0 £0 £0 £0 £0 £151 £151 £151

# Cashier Sections

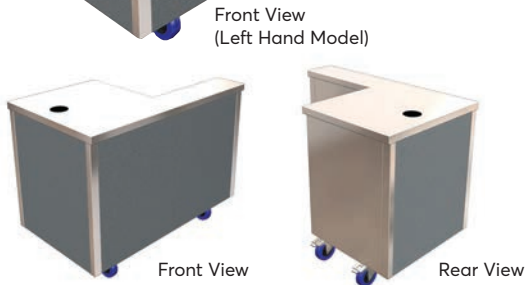


The versatile cashier sections are available as left or right handed work stations; have lockable castors and can be independently positioned or combined with other dining carts to form a payment point. The worktop provides a durable display point for cash register, drawer or Epos system. Each unit is supplied with cable tidy management ports, a double switched socket for till equipment and a 13amp plug with lead. A cashier seating recess complete with a sloping footrest is also provided for users. This mobile cash section is suitable for most types of cash registers, barcode scanners and Epos systems. It's flexible nature means it can be adapted to different positions around the serving space, avoiding queuing bottlenecks and improving customer flow.



DOWNLOAD ALL TECHNICAL DRAWINGS from [www.cedfabsltd.co.uk](http://www.cedfabsltd.co.uk)

All models supplied with 3m lead & 13amp UK plug 13A | 230V | 50Hz



LEFT HAND  
BASE MODEL

Model	Weight (kg)	Dimensions (LxDxH mm)	GN Capacity (1/1)	Total Power (kW)	List Price
GCSL	57	1175 x 700 x 900	3	3.0	£1,507

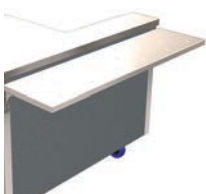


RIGHT HAND  
BASE MODEL

Model	Weight (kg)	Dimensions (LxDxH mm)	GN Capacity (1/1)	Total Power (kW)	List Price
GCSR	57	1175 x 700 x 900	3	3.0	£1,507

\*All option prices are to be added onto base unit prices for total unit price

## Trayslide Options



SOLID  
DROP DOWN

Option	Dimensions (LxD mm)	List Price
GSTS3	1175 x 302	£194



TUBULAR  
DROP DOWN

Option	Dimensions (LxD mm)	List Price
GTTS3	1175 x 298	£283

FOR HEIGHT OPTIONS REFER TO PREVIOUS PAGE



## Colour Options

\*All units as standard come in Merlin Grey.



Black Light Grey White Buttermilk Blue Red Green Satin Steel Oak Beech Walnut

GBLAKCS3 GGREYCS3 GWHITCS3 GCREMCS3 GBLUECS3 GPREDCS3 GGRENCS GSSTLCS3 GOAKCS3 GBEECCS3 GWALNCS3

£0 £0 £0 £0 £0 £0 £0 £0 £151 £151 £151

# Cutlery & Tray Pick Up Unit



Front View



Rear View

The durable self help cutlery dispenser & open tray pick up cupboard is made in a convenient 2-1GN size and can be positioned in a counter run or wall sited to suit the servery layout. The standard open tray cupboard features a s/steel plain worktop & 730mm wide open access tray storage base area. The 235mm high self help cutlery dispenser has rubber feet to prevent surface scratches. The angled self help front face features 8 x 115mm (diameter) perforated steel cutlery containers, for easily cutlery choice. The top surface houses 4 x 1/4GN x 100mm deep GN containers for condiment sachets, napkins etc.

## Height Options

Base units as standard are 900mm high

JUNIOR HEIGHTS	Option	Dimensions (H mm)	List Price
	G850H	850	£0
G800H	800	£0	

\*Extended lead times

## BASE MODEL

Model	Weight (kg)	Dimensions (LxDxH mm)	Overall Height (including dispenser)(mm)	GN Capacity (1/1)	Total Power (kW)	List Price
GCTU	40	825 x 700 x 900	1135	2	N/A	£1,759



\*All option prices are to be added onto base unit prices for total unit price

## Trayslide Options



## SOLID DROP DOWN

Option	Dimensions (LxD mm)	List Price
GSTS2	825 x 302	£174



## TUBULAR DROP DOWN

Option	Dimensions (LxD mm)	List Price
GTTS2	825 x 298	£221



## Colour Options

\*All units as standard come in Merlin Grey.



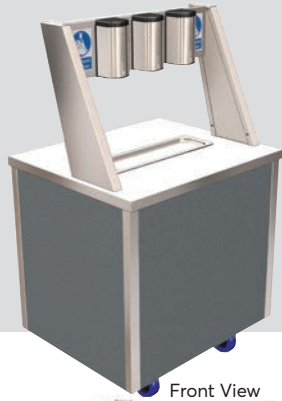
Black Light Grey White Buttermilk Blue Red Green Satin Steel Oak Beech Walnut

GBLAKP2 GGREYP2 GWHITEP2 GCREMEP2 GBLUEP2 GPREDEP2 GGRENEP2 GSSTLEP2 GOAKEP2 GBEECEP2 GWALNEP2

£0 £0 £0 £0 £0 £0 £0 £0 £151 £151 £151



# Santising Dispenser Station

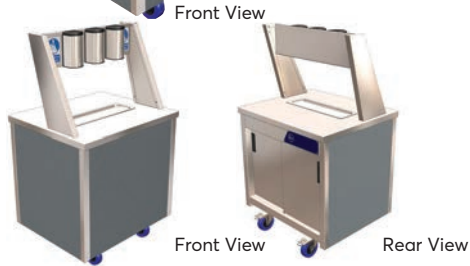


This modern auto electronic sanitising dispenser station has lockable castors and can be positioned within a counter run or at the entrance of the dining area. The model has 3x auto electronic sanitising dispensers offering 1500 dose capacity & a gel storage cupboard under. The dispensers are suitable for high alcohol sanitiser gel =>60%, have touchless operation from a sensor & use 4x rechargeable AA batteries each (recharging batteries/battery charger included). The s/steel worktop has a removable drip tray (2-4GN x 20mm).



DOWNLOAD ALL TECHNICAL DRAWINGS from [www.cedfabsltd.co.uk](http://www.cedfabsltd.co.uk)

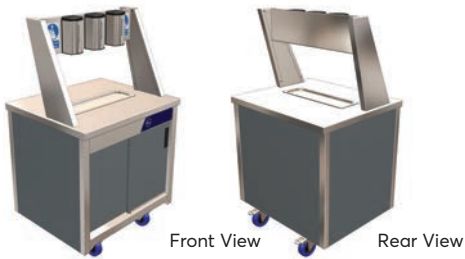
4 x rechargeable AA batteries (recharging batteries) and battery charger included.



BASE MODEL

Model	Weight (kg)	Dimensions (LxDxH mm)	Overall Height (mm)	GN Capacity (1/1)	Total Power (kW)	List Price
GSAN2	33	825 x 700 x 900	1440	2	N/A	£2,765

## Wall Sited Base Unit



BASE MODEL

Model	Weight (kg)	Dimensions (LxDxH mm)	Overall Height (mm)	GN Capacity (1/1)	Total Power (kW)	List Price
GWSSAN2	33	825 x 700 x 900	1440	2	N/A	£2,765

\*All option prices are to be added onto base unit prices for total unit price

## Trayslide Options



SOLID DROP DOWN

Option	Dimensions (LxD mm)	List Price
GSTS2	825 x 302	£174



TUBULAR DROP DOWN

Option	Dimensions (LxD mm)	List Price
GTTS2	825 x 298	£221

FOR HEIGHT OPTIONS REFER TO PREVIOUS PAGE



## Colour Options

\*All units as standard come in Merlin Grey.

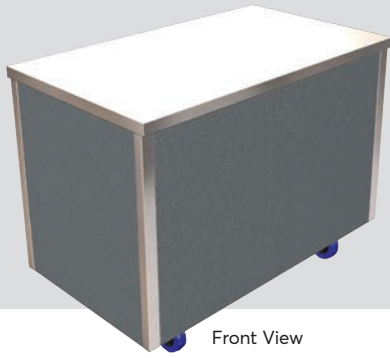
Black	Light Grey	White	Buttermilk	Blue	Red	Green	Satin Steel	Oak	Beech	Walnut
GBLAKCHA2	GGREYCHA2	GWHITCHA2	GCREMCHA2	GBLUECHA2	GPREDCHA2	GGRENCHA2	GSSTLCHA2	GOAKCHA2	GBEECCHA2	GWALNCHA2
£0	£0	£0	£0	£0	£0	£0	£0	£151	£151	£151

## Colour Options (Wall Sited)

\*All units as standard come in Merlin Grey.

Black	Light Grey	White	Buttermilk	Blue	Red	Green	Satin Steel	Oak	Beech	Walnut
GBLAKWSA2	GGREYWSA2	GWHITWSA2	GCREMWSA2	GBLUEWSA2	GPREDWSA2	GGRENWSA2	GSSTLWSA2	GOAKWSA2	GBEECWSA2	GWALNWSA2
£0	£0	£0	£0	£0	£0	£0	£0	£151	£151	£151

# Ambient Cupboard Plain Top



Front View

The plain top ambient storage cupboard (no gantry) is made in 4 different sizes to suit your servery layout. The standard cupboard features a s/steel plain worktop with a rear cupboard under. Behind the removable rear sliding s/steel cupboard doors, are two tiers of grid shelving for plate/container storage.

## Height Options

Base units as standard are 900mm high

JUNIOR HEIGHTS	Option	Dimensions (H mm)	List Price
	G850H	850	£0
G800H	800	£0	

\*Extended lead times

When used with a heated or ambient gantry all models supplied with 3m lead & 13amp UK plug 13A | 230V | 50Hz



Rear View

### BASE MODEL

Model	Weight (kg)	Dimensions (LxDxH mm)	GN Capacity (1/1)	Total Power (No Gantry)(kW)	List Price
GACP2	60	825 x 700 x 900	2	N/A	£1,445
GACP3	70	1175 x 700 x 900	3	N/A	£1,571
GACP4	82	1525 x 700 x 900	4	N/A	£1,806
GACP5	91	1875 x 700 x 900	5	N/A	£2,026

\*All option prices are to be added onto base unit prices for total unit price

## Gantry Options



Ambient gantries, s/steel, c/w LED lighting, opaque cover, colour 4000k, reversible single curved glass sneeze screen, self help / ass. serve use, +397(h) above worktop and end glass.

### AMBIENT GANTRY

Option	Weight (kg)	Dimensions (LxDxH mm)	GN Capacity (1/1)	Power (kW)	List Price
GAG2	7	825 x 700 x 397	2	0.008	£792
GAG3	9	1175 x 700 x 397	3	0.014	£824
GAG4	12	1525 x 700 x 397	4	0.016	£871
GAG5	16	1875 x 700 x 397	5	0.022	£925



Ambient self help island gantries, s/steel, double curved sneeze screen glass, end glass, c/w LED lighting, opaque cover, colour 4000k, self help use, +397(h) above worktop and end glass.

### ISLAND AMBIENT GANTRY

Option	Weight (kg)	Dimensions (LxDxH mm)	GN Capacity (1/1)	Power (kW)	List Price
GAIG2	9	825 x 700 x 397	2	0.008	£973
GAIG3	11	1175 x 700 x 397	3	0.014	£1,271
GAIG4	13	1525 x 700 x 397	4	0.016	£1,500
GAIG5	18	1875 x 700 x 397	5	0.022	£1,673



Ambient assisted service deli gantries, s/steel, full height curved glass front, end glass, ambient glass mid shelf (not chilled), c/w LED lighting, opaque cover, colour 4000k, ass. service use, +540(h) above worktop.

### DELI AMBIENT GANTRY

Option	Weight (kg)	Dimensions (LxDxH mm)	GN Capacity (1/1)	Power (kW)	List Price
GADG2	12	825 x 700 x 540	2	0.008	£1,208
GADG3	17	1175 x 700 x 540	3	0.014	£1,318
GADG4	21	1525 x 700 x 540	4	0.016	£1,437
GADG5	26	1875 x 700 x 540	5	0.022	£1,664



Hot gantries, s/steel, reversible single curved glass sneeze screen, self help / ass. serve use, +397(h) above worktop, reinforced worktop for heat, fitted with 200W quartz infra-red jacketed safety lamps.

### HOT GANTRY

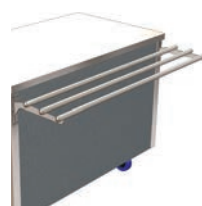
Option	Weight (kg)	Dimensions (LxDxH mm)	GN Capacity (1/1)	Power (kW)	List Price
GHG2PTAC	7	825 x 700 x 397	2	0.4	£856
GHG3PTAC	9	1175 x 700 x 397	3	0.6	£980
GHG4PTAC	12	1525 x 700 x 397	4	0.8	£1,114
GHG5PTAC	16	1875 x 700 x 397	5	1.0	£1,256

## Trayslide Options



### SOLID DROP DOWN

Option	Dimensions (LxD mm)	List Price
GSTS2	825 x 302	£174
GSTS3	1175 x 302	£194
GSTS4	1525 x 302	£211
GSTS5	1875 x 302	£228



### TUBULAR DROP DOWN

Option	Dimensions (LxD mm)	List Price
GTTS2	825 x 298	£221
GTTS3	1175 x 298	£283
GTTS4	1525 x 298	£321
GTTS5	1875 x 298	£375

Colour Options \*for colour previews & prices refer to next page

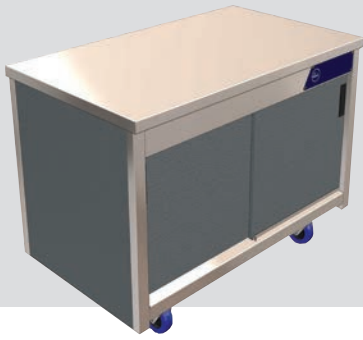
\*All units as standard come in Merlin Grey.

\*Use code below with either 2,3,4 or 5 on the end depending on the size of the unit chosen.

Black Light Grey White Buttermilk Blue Red Green Satin Steel Oak Beech Walnut

GBLAKCHA2-5 GGREYCHA2-5 GWHITCHA2-5 GCREMCHA2-5 GBLUECHA2-5 GPREDCHA2-5 GGRENCHA2-5 GSSTLCHA2-5 GOAKCHA2-5 GBEECCHA2-5 GWALNCHA2-5

# Ambient Cupboard Plain Top (Wall Sited)



The wall plain top ambient cupboard fits neatly against walls, in alcoves, recesses, or back to back with island units. The plain top ambient storage cupboard (no gantry) is made in 4 different sizes to suit your servery layout. The standard cupboard features a s/steel plain worktop with a rear cupboard under. Behind the removable rear sliding s/steel cupboard doors, are two tiers of grid shelving for plate/container storage.

DOWNLOAD ALL TECHNICAL DRAWINGS from [www.cedfabsltd.co.uk](http://www.cedfabsltd.co.uk)

\*When used with a heated or ambient gantry all models supplied with 3m lead & 13amp UK plug 13A | 230V | 50Hz



Rear View

BASE MODEL

Model	Weight (kg)	Dimensions (LxDxH mm)	GN Capacity (1/1)	Total Power (No Gantry)(kW)	List Price
GWSACP2	60	825 x 700 x 900	2	N/A	£1,445
GWSACP3	70	1175 x 700 x 900	3	N/A	£1,571
GWSACP4	82	1525 x 700 x 900	4	N/A	£1,806
GWSACP5	91	1875 x 700 x 900	5	N/A	£2,026

\*All option prices are to be added onto base unit prices for total unit price

## Gantry Options



Wall sited ambient gantries, s/steel, c/w LED lighting, opaque cover, colour 4000k, single curved glass sneeze screen, self help use, +397(h) above worktop and end glass.

AMBIENT GANTRY

Option	Weight (kg)	Dimensions (LxDxH mm)	GN Capacity (1/1)	Power (kW)	List Price
GWSAG2	7	825 x 700 x 397	2	0.008	£792
GWSAG3	9	1175 x 700 x 397	3	0.014	£824
GWSAG4	12	1525 x 700 x 397	4	0.016	£871
GWSAG5	16	1875 x 700 x 397	5	0.022	£925



Hot gantries, s/steel, single curved glass sneeze screen, self help use, +397(h) above worktop, reinforced worktop for heat, fitted with 200W quartz infra-red jacketed safety lamps.

HEATED GANTRY

Option	Weight (kg)	Dimensions (LxDxH mm)	GN Capacity (1/1)	Power (kW)	List Price
GWSHG2PTAC	9	825 x 700 x 397	2	0.4	£856
GWSHG3PTAC	11	1175 x 700 x 397	3	0.6	£980
GWSHG4PTAC	13	1525 x 700 x 397	4	0.8	£1,114
GWSHG5PTAC	18	1875 x 700 x 397	5	1.0	£1,256

## Trayslide Options



SOLID DROP DOWN

Option	Dimensions (LxD mm)	List Price
GSTS2	825 x 302	£174
GSTS3	1175 x 302	£194
GSTS4	1525 x 302	£211
GSTS5	1875 x 302	£228



TUBULAR DROP DOWN

Option	Dimensions (LxD mm)	List Price
GTTS2	825 x 298	£221
GTTS3	1175 x 298	£283
GTTS4	1525 x 298	£321
GTTS5	1875 x 298	£375

\*Extended lead times

## Height Options

Base units as standard are 900mm high

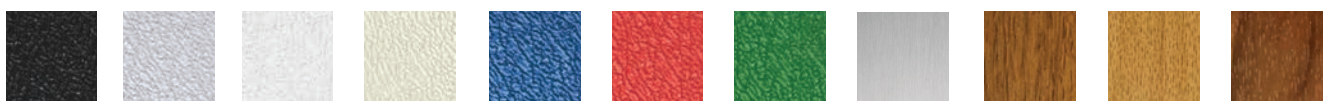
JUNIOR HEIGHTS	Option	Dimensions (H mm)	List Price
	G850H	850	£0
	G800H	800	£0



## Colour Options

\*All units as standard come in Merlin Grey.

\*Use code below with either 2,3,4 or 5 on the end depending on the size of the unit chosen.

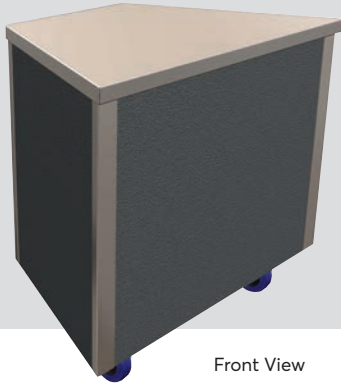


Black Light Grey White Buttermilk Blue Red Green Satin Steel Oak Beech Walnut

GBLAKWSA2-5 GGREYWSA2-5 GWHITWSA2-5 GCREMWSA2-5 GBLUEWSA2-5 GPREDWSA2-5 GGRENWSA2-5 GSSTLWSA2-5 GOAKWSA2-5 GBEECWSA2-5 GWALNWSA2-5

£0 £0 £0 £0 £0 £0 £0 £0 £151 £151 £151

# 45° & 90° Corner Infill Units



The fully clad 45° or 90° corner infill units have lockable castors & can be combined with other dining carts to change the direction of the servery run, whilst continuing the worktop flow. They are finished on all four sides to create internal or external angles (45°/90°) between other carts.

## Height Options

Base units as standard are 900mm high

JUNIOR HEIGHTS	Option	Dimensions (H mm)	List Price
	G850H	850	£0
G800H	800	£0	

\*Extended lead times

Front View



Front View



Rear View

45° INFILL BASE UNIT

45°

Weight (kg)

Dimensions (LxDxH mm)

Total Power (kW)

List Price

GC45

62

1036 x 647 x 900

N/A

£1,013

90°

Weight (kg)

Dimensions (LxDxH mm)

Total Power (kW)

List Price

GC90

77

1509 x 495 x 900

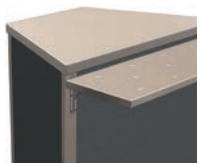
N/A

£1,013

90° INFILL BASE UNIT

\*All option prices are to be added onto base unit prices for total unit price

## Trayslide Options



45° SOLID DROP DOWN

Option  
GSTS45

Dimensions (LxD mm)  
1035 x 302

List Price  
£194



45° TUBULAR DROP DOWN

Option  
GTTS45

Dimensions (LxD mm)  
1035 x 298

List Price  
£283



90° SOLID DROP DOWN

Option  
GSTS90

Dimensions (LxD mm)  
1509 x 302

List Price  
£211



90° TUBULAR DROP DOWN

Option  
GTTS90

Dimensions (LxD mm)  
1509 x 298

List Price  
£321

## 45° Colour Options

\*All units as standard come in Merlin Grey.

Black Light Grey White Buttermilk Blue Red Green Satin Steel Oak Walnut Beech

GBLAKCHA45 GGREYCHA45 GWHITCHA45 GCREMCHA45 GBLUECHA45 GPREDCHA45 GGRENCHA45 GSSTLCHA45 GOAKCHA45 GWALNCHA45 GBEECCHA45

£0 £0 £0 £0 £0 £0 £0 £0 £151 £151 £151

## 90° Colour Options

\*All units as standard come in Merlin Grey.

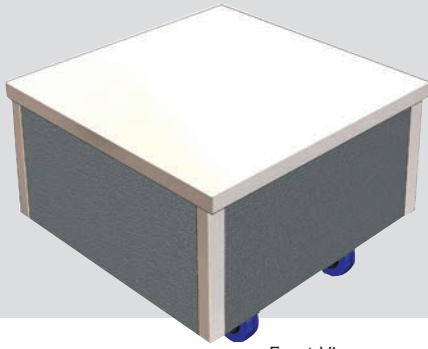


Black Light Grey White Buttermilk Blue Red Green Satin Steel Oak Beech Walnut

GBLAKCHA90 GGREYCHA90 GWHITCHA90 GCREMCHA90 GBLUECHA90 GPREDCHA90 GGRENCHA90 GSSTLCHA90 GOAKCHA90 GBEECCHA90 GWALNCHA90

£0 £0 £0 £0 £0 £0 £0 £0 £151 £151 £151

# Low Height Tray Pick Up

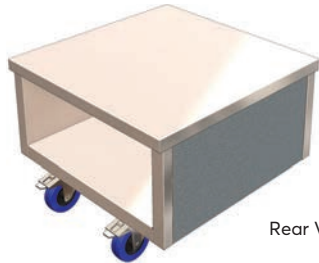


Front View

The ambient low height tray pick up also doubles up as a soup kettle stand if required & has a plain s/steel worktop. It is ideal for use as a freestanding collection point at the entrance to the dining hall or inbetween other glide units on a counter run. The model has an open rear and a base shelf for storing extra trays in.



DOWNLOAD ALL TECHNICAL DRAWINGS from [www.cedfabsltd.co.uk](http://www.cedfabsltd.co.uk)



Rear View

LEFT HAND  
BASE MODEL

Model	Weight (kg)	Dimensions (LxDxH mm)	Rear Storage (WxH mm)	Total Power (kW)	List Price
GTP1	26	700 x 700 x 500	605 x 263	N/A	£802

\*All option prices are to be added onto base unit prices for total unit price

## Colour Options \*previews of colours at bottom of page

\*All units as standard come in Merlin Grey.

Black	Light Grey	White	Buttermilk	Blue	Red	Green	Satin Steel	Oak	Beech	Walnut
GBLAKGTP1	GGREYGTP1	GWHITGTP1	GCREMGTP1	GBLUEGTP1	GPREDGTP1	GGRENGTP1	GSSTLGTP1	GOAKGTP1	GBEECGTP1	GWALNGTP1
£0	£0	£0	£0	£0	£0	£0	£0	£151	£151	£151

# Waste Clearing Trolley

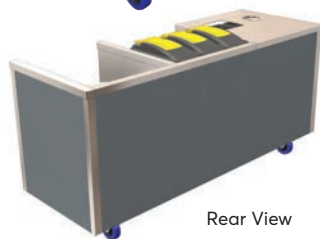


Front View

The waste clearing trolley is made in a 5-1GN size. It can be used as a freestanding or wall sited unit that matches the rest of the servery units. The left hand end has waste scrapping section, with a lift out s/steel worktop funnel for pouring waste liquid through. A 520mm wide 2 tier section for plate returns (R hand end) will also accept dishwash baskets & basket or tray storage underneath. The unit comes with 5no removable bins for liquid (25L) + food waste (50L), paper, cans & cutlery (all 25L) with bin indentifications vinyl labels to each.



FOR HEIGHT OPTIONS REFER TO PREVIOUS PAGE



Rear View

BASE MODEL

Model	Weight (kg)	Dimensions (LxDxH mm)	GN Capacity (1/1)	Total Power (kW)	List Price
GWT	68	1875 x 675 x 900	5	N/A	£2,293

\*All option prices are to be added onto base unit prices for total unit price

## Colour Options

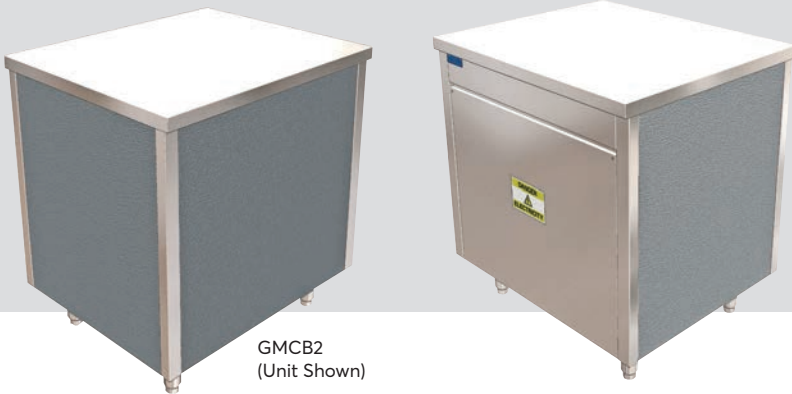
\*All units as standard come in Merlin Grey.

Black	Light Grey	White	Buttermilk	Blue	Red	Green	Satin Steel	Oak	Beech	Walnut
GBLAKCHA5	GGREYCHA5	GWHITCHA5	GCREMCHA5	GBLUECHA5	GPREDCHA5	GGRENCHA5	GSSTLCHA5	GOAKCHA5	GBEECCHA5	GWALNCHA5
£0	£0	£0	£0	£0	£0	£0	£0	£151	£151	£151

# MCB Station



DOWNLOAD ALL  
TECHNICAL DRAWINGS  
from [www.cedfabsltd.co.uk](http://www.cedfabsltd.co.uk)



GMCB2  
(Unit Shown)

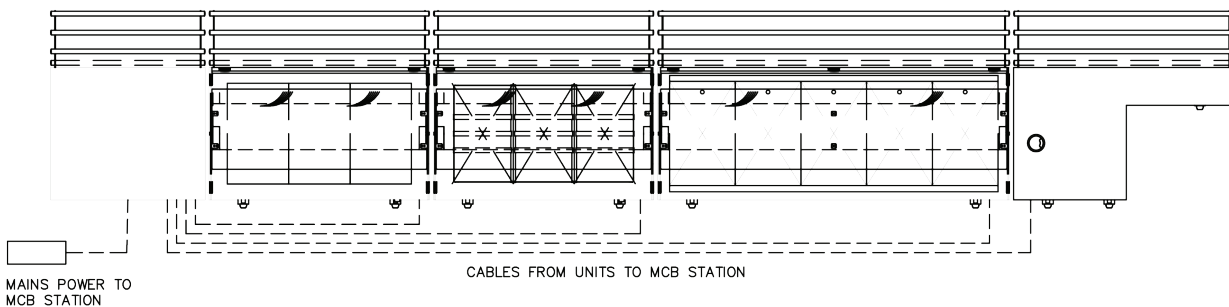
The Glide Elec. MCB Station (GMCB2), 2-1 GN, Designed to work with multiple Glide units, to allow powering from one point. Unit is 825(l) x 700(d) x 900(h) mm. Fitted internally with an MCB unit / 16-32A commando plug, completed with a specified number of power cables. Plain top worktop, front / sides base panels in leathergrain plastisol steel, colour merlin grey, cupboard under with screw fixed rear lift off access panel, adjustable height feet. Unit is not mobile. Tray rail optional. Open void in floor area for cable entry and exit. The unit may be fitted with either 13A sockets with or 16/32A commando plugs, also a single or three phase electrical specification for this unit would be job specific.

ALL UNITS  
ARE BESPOKE  
SO PLEASE  
ENQUIRE FOR  
PRICES

Example run; front & back shown  
utilising the MCB station



MCB STATION (GMCB2)	CERAN TOP HOT CUPBOARD WITH HEATED GANTRY 3 † GN (GHP3+GHG3+GTTS3) 2.95kW 13A	BAIN MARIE HOT CUPBOARD WITH HEATED GANTRY 3 † GN (GBM3+GHG3+GTTS3) 2.83kW 13A	COLD WELL WITH AMBIENT GANTRY 5 † GN (GCW5HT+GAG5+GTTS5) 1.68kW 13A	CASHIER SECTION RH MODEL 3 † GN (GCSR+GTTS3) 3.0kW 13A
------------------------	--	---	--	---







Head Office  
Lancashire

CED Fabrications Ltd  
Units A1-A4, Falcon Court  
Clayton Business Park  
Clayton-le-Moors,  
Hyndburn, Lancashire  
BB5 5JD

T: 01254 238 282  
F: 01254 238 228

T: 0151 545 2840

CED Fabrications Ltd,  
Units 4 & 5,  
Nexus Industrial Estate,  
Randles Road, Knowsley  
Prescot, Merseyside  
L34 9HX



Manufacturing Plant  
Merseyside



Manufacturing Plant  
Kent

CED Fabrications Ltd  
Building 3  
Sandwich Industrial Estate  
Sandwich, Kent  
CT13 9LY

T: 01304 617 377



Certificate Number 7895  
ISO 9001, ISO 14001

**SALES LINE**  
01254 238 282

All prices exclude VAT - Free delivery applies to all orders over £350. All orders under £350 incur a £40 charge. Deliveries to UK mainland ONLY.



DOWNLOAD ALL  
TECHNICAL DRAWINGS  
from [www.cedfabsltd.co.uk](http://www.cedfabsltd.co.uk)

Distributor stamp

w: [www.cedfabsltd.co.uk](http://www.cedfabsltd.co.uk)  
e: [sales@cedlimited.com](mailto:sales@cedlimited.com)